

Scenic Circle Canterbury Rams Basketball - Season Box Score

Record	Overall	Home	Away	Neutral
All Games	6-12	3-6	3-6	0-0
Conference	6-12	3-6	3-6	0-0
Non-Conference	0-0	0-0	0-0	0-0
Playoff	0-0	0-0	0-0	0-0

Name	G/GS	FG	FG%	3Pt	3Pt%	FT	FT%	PTS	Avg	P/S	ORB	DRB	TR	Avg	PF	AST	TO	BS	ST	DA	MIN
Ashley Rees	18/3	7/27	25.9	0/7	0.00	7/14	50.0	21	1.17	0.62	9	13	22	1.22	22	16	20	1	2	0	173
Tim Edmonds	18/3	52/130	40.0	16/66	24.2	19/34	55.9	139	7.72	0.95	15	23	38	2.11	34	14	17	2	27	0	337
Jeremy Kench	17/16	113/214	52.8	22/62	35.5	70/97	72.2	318	18.7	1.21	11	57	68	4.00	60	58	57	1	49	0	535
Mark Morrison	18/15	52/148	35.1	17/62	27.4	12/16	75.0	133	7.39	0.85	13	49	62	3.44	36	22	29	3	5	0	510
Sam Sparr	18/18	113/223	50.7	3/19	15.8	29/54	53.7	258	14.3	1.03	54	100	154	8.56	60	46	40	8	31	0	546
Mike Townsend	18/0	13/33	39.4	0/0	0.00	1/4	25.0	27	1.50	0.77	11	11	22	1.22	22	2	12	4	8	0	152
Tony Hawke	3/0	1/1	100	0/0	0.00	0/0	0.00	2	0.67	2.00	0	0	0	0.00	0	0	0	0	0	0	3:55
Nathan Hyde	18/7	11/36	30.6	0/2	0.00	11/12	91.7	33	1.83	0.79	8	19	27	1.50	35	6	12	3	7	0	223
Paul McFarlin	8/0	0/3	0.00	0/0	0.00	1/2	50.0	1	0.13	0.25	0	2	2	0.25	0	0	1	0	2	0	12:57
Dennis Trammell	18/18	169/333	50.8	48/102	47.1	74/87	85.1	460	25.6	1.22	50	63	113	6.28	39	32	38	0	31	0	678
Rewi Manahi	18/10	43/90	47.8	0/0	0.00	40/57	70.2	126	7.00	1.07	32	54	86	4.78	43	11	17	0	6	0	364
Joel Hart	13/0	23/63	36.5	10/36	27.8	7/12	58.3	63	4.85	0.91	4	7	11	0.85	15	4	12	0	5	0	135
Team											41	53	94				12		3		
Totals	18	597/1301	45.9	116/356	32.6	271/389	69.7	1581	87.8	1.06	248	451	699	38.8	366	211	267	22	176	0	
Opponents	G/GS	FG	FG%	3Pt	3Pt%	FT	FT%	PTS	Avg	P/S	ORB	DRB	TR	Avg	PF	AST	TO	BS	ST	DA	
	18	617/1255	49.2	119/375	31.7	278/411	67.6	1631	90.6	1.12	257	512	769	42.7	331	298	316	70	150	0	

SHOOTING	Scenic Circle Canterbury Rams	Opponents	REBOUNDING	Scenic Circle Canterbury Rams	Opponents
Field Goal%	45.9	49.2	Total Rebound %	47.6	52.4
2Pt Goal%	50.9	56.6	Off. Rebound %	32.6	36.3
3Pt Goal%	32.6	31.7	Def. Rebound %	63.7	67.4
Free Throw %	69.7	67.6	Total Rebounds	699 (38.8)	769 (42.7)
			Off. Rebounds	248 (13.8)	257 (14.3)
			Def. Rebounds	451 (25.1)	512 (28.4)
BALL HANDLING			Team Rebounds	94 (5.2)	80 (4.4)
Assists	211 (11.7)	298 (16.6)			
Turnovers	267 (14.8)	316 (17.6)			
Steals	176 (9.8)	150 (8.3)	SCORING		
Def. Assists	0 (0.0)	0 (0.0)	Total Points	1581 (87.8)	1631 (90.6)
BH Error%	14.3	16.7	Pts off Turnovers	349 (19.4)	295 (16.4)
			2nd Effort Pts	209 (11.6)	265 (14.7)
			Pts off Bench	313 (17.4)	356 (19.8)
OTHER			3Pt Points	348 (19.3)	357 (19.8)
Off. Possessions	1861 (103.4)	1890 (105.0)	Free Throw Pts	271 (15.1)	278 (15.4)
Pts per Possession	0.85	0.86			
Def. Efficiency	40.6%	41.9%			
Charges Taken	27	24			

Scenic Circle Canterbury Rams Basketball - Season Summary

Record													
Date	Overall	Conf	Site	Score	Opponent	High Point	High Rebound						
26/03/06	1- 0	1- 0	H	W 92-74	Otago Nuggets	29-D Trammell	9-J Kench						
08/04/06	1- 1	1- 1	H	L 78-88	0800 Easy LPG Hawkes Bay Hawks	19-D Trammell	8-S Sparr						
22/04/06	2- 1	2- 1	A	W 74-65	Appliance Shed Harbour Heat	18-J Kench	13-S Sparr						
23/04/06	2- 2	2- 2	A	L 93-105	GI Juice Auckland Stars	37-D Trammell	8-S Sparr						
28/04/06	2- 3	2- 3	H	L 91-98	GI Juice Auckland Stars	31-D Trammell	8-S Sparr						
05/05/06	2- 4	2- 4	H	L 69-86	Appliance Shed Harbour Heat	20-S Sparr	5-S Sparr, D						
07/05/06	2- 5	2- 5	A	L 72-86	NBS Nelson Giants	41-D Trammell	8-M Morrison						
11/05/06	3- 5	3- 5	H	W 109-96	NZCT Taranaki Mountain Airs	26-J Kench	12-S Sparr						
20/05/06	3- 6	3- 6	H	L 84-93	St Laurence Wellington Saints	26-D Trammell	8-D Trammell						
27/05/06	3- 7	3- 7	H	L 87-97	Waikato Pistons	29-D Trammell	9-S Sparr						
01/06/06	3- 8	3- 8	A	L 77-78	Waikato Pistons	21-D Trammell	9-S Sparr, D						
05/06/06	4- 8	4- 8	H	W 85-81	Inspire Net Manawatu Jets	27-D Trammell	14-S Sparr						
09/06/06	5- 8	5- 8	A	W 92-85	Otago Nuggets	37-D Trammell	11-D Trammell						
14/06/06	5- 9	5- 9	H	L 81-88	NBS Nelson Giants	24-J Kench	9-S Sparr						
16/06/06	5-10	5-10	A	L 80-90	0800 Easy LPG Hawkes Bay Hawks	18-S Spann, D Trammell	8-D Trammell						
17/06/06	6-10	6-10	A	W 108-90	Inspire Net Manawatu Jets	27-S Spann	11-S Sparr						
23/06/06	6-11	6-11	A	L 94-105	NZCT Taranaki Mountain Airs	30-D Trammell	11-S Sparr						
24/06/06	6-12	6-12	A	L 115-126 3OT	St Laurence Wellington Saints	36-J Kench	14-S Sparr						

Team Statistics Summary

Opponent	FG	3 Pt	FT	PTS	ORB	DRB	TR	PF	AST	TO	BS	ST	DA
Otago Nuggets	37/77	4/15	14/19	92	13	34	47	23	13	12	2	9	0
0800 Easy LPG Hawkes Bay Hawks	30/77	7/23	11/18	78	14	21	35	26	12	16	1	14	0
Appliance Shed Harbour Heat	26/65	2/11	20/31	74	14	35	49	15	12	13	1	9	0
GI Juice Auckland Stars	34/72	6/23	19/29	93	17	21	38	17	11	20	1	9	0
GI Juice Auckland Stars	33/65	9/21	16/21	91	9	21	30	20	13	15	0	6	0
Appliance Shed Harbour Heat	25/64	3/16	16/24	69	12	18	30	13	6	16	1	18	0
NBS Nelson Giants	24/66	11/26	13/19	72	11	20	31	23	7	13	1	3	0
NZCT Taranaki Mountain Airs	37/69	7/14	28/36	109	16	28	44	24	13	12	3	6	0
St Laurence Wellington Saints	35/72	6/20	8/9	84	10	20	30	22	15	15	2	8	0
Waikato Pistons	32/74	8/23	15/25	87	14	34	48	22	13	15	1	5	0
Waikato Pistons	32/67	2/14	11/20	77	16	23	39	10	6	16	1	19	0
Inspire Net Manawatu Jets	32/71	11/30	10/15	85	15	23	38	21	16	17	1	10	0
Otago Nuggets	35/75	13/26	9/15	92	12	28	40	20	5	14	1	11	0
NBS Nelson Giants	32/73	3/14	14/20	81	20	16	36	17	8	8	0	13	0
0800 Easy LPG Hawkes Bay Hawks	32/68	3/18	13/17	80	11	21	32	24	13	13	2	10	0
Inspire Net Manawatu Jets	43/67	6/15	16/21	108	10	28	38	20	24	19	0	8	0
NZCT Taranaki Mountain Airs	36/83	6/20	16/20	94	17	32	49	20	12	15	1	6	0
St Laurence Wellington Saints	42/96	9/27	22/30	115	17	28	45	29	12	18	3	12	0

Individual Season Highs

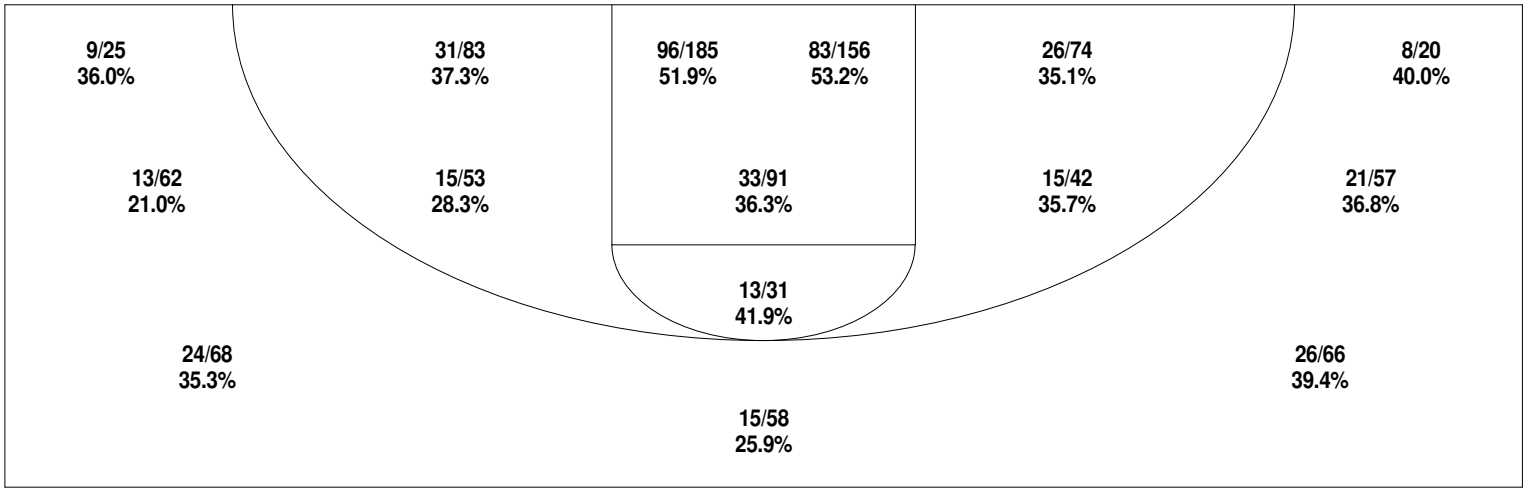
Most Pts:	41	D Trammell vs. NBS Nelson Giants
Most Fgm:	14	D Trammell vs. Otago Nuggets
Most Fga:	25	D Trammell vs. St Laurence Wellington Saints
Most 3pm:	9	D Trammell vs. Multiple Oppo.
Most 3pa:	13	D Trammell vs. NBS Nelson Giants
Most Ftm:	10	D Trammell vs. Auckland Stars Waitakere
Most Fta:	12	D Trammell vs. Auckland Stars Waitakere
Most Reb:	14	Multiple Players
Most Orb:	6	Multiple Players
Most Drb:	11	S Spann vs. St Laurence Wellington Saints
Most Ast:	7	D Trammell vs. Inspire Net Manawatu Jets
Most Stl:	6	T Edmonds vs. Waikato Pistons
Most Blk:	2	M Townsend vs. NZCT Taranaki Mountain Airs

Team Season Highs

Most Pts:	115	vs. St Laurence Wellington Saints
Most Fgm:	43	vs. Inspire Net Manawatu Jets
Most Fga:	96	vs. St Laurence Wellington Saints
Most 3pm:	13	vs. Otago Nuggets
Most 3pa:	30	vs. Inspire Net Manawatu Jets
Most Ftm:	28	vs. NZCT Taranaki Mountain Airs
Most Fta:	36	vs. NZCT Taranaki Mountain Airs
Most Reb:	49	vs. Appliance Shed Harbour Heat
Most Orb:	20	vs. NBS Nelson Giants
Most Drb:	35	vs. Appliance Shed Harbour Heat
Most Ast:	24	vs. Inspire Net Manawatu Jets
Most Stl:	19	vs. Waikato Pistons
Most Blk:	3	vs. NZCT Taranaki Mountain Airs

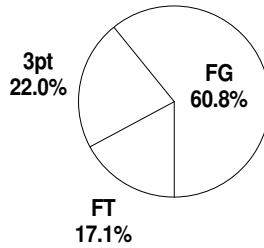
Scenic Circle Canterbury Rams Basketball - Season Statistical Ranking															
Field Goals	Made	Att	FG%	3 Point Goals			Made	Att	3FG%	Free Throws		Made	Att	FT%	
	HAWKE, Tony	1	1	100	TRAMMELL, Dennis			48	102	47.1	HYDE, Nathan		11	12	91.7
	KENCH, Jeremy	113	214	52.8	KENCH, Jeremy			22	62	35.5	TRAMMELL, Dennis		74	87	85.1
	TRAMMELL, Dennis	169	333	50.8	HART, Joel			10	36	27.8	MORRISON, Mark		12	16	75.0
	SPARN, Sam	113	223	50.7	MORRISON, Mark			17	62	27.4	KENCH, Jeremy		70	97	72.2
	MANAHI, Rewi	43	90	47.8	EDMONDS, Tim			16	66	24.2	MANAHI, Rewi		40	57	70.2
	EDMONDS, Tim	52	130	40.0	SPARN, Sam			3	19	15.8	HART, Joel		7	12	58.3
	TOWNSEND, Mike	13	33	39.4							EDMONDS, Tim		19	34	55.9
	HART, Joel	23	63	36.5							SPARN, Sam		29	54	53.7
	MORRISON, Mark	52	148	35.1							REES, Ashley		7	14	50.0
HYDE, Nathan	11	36	30.6							McFARLIN, Paul		1	2	50.0	
REES, Ashley	7	27	25.9							TOWNSEND, Mike		1	4	25.0	
Off Rebounds	Num	G	Avg	Def Rebounds			Num	G	Avg	Total Rebounds		Num	G	Avg	
	SPARN, Sam	54	18	3.00	SPARN, Sam			100	18	5.56	SPARN, Sam		154	18	8.56
	TRAMMELL, Dennis	50	18	2.78	TRAMMELL, Dennis			63	18	3.50	TRAMMELL, Dennis		113	18	6.28
	MANAHI, Rewi	32	18	1.78	KENCH, Jeremy			57	17	3.35	MANAHI, Rewi		86	18	4.78
	EDMONDS, Tim	15	18	0.83	MANAHI, Rewi			54	18	3.00	KENCH, Jeremy		68	17	4.00
	MORRISON, Mark	13	18	0.72	MORRISON, Mark			49	18	2.72	MORRISON, Mark		62	18	3.44
	KENCH, Jeremy	11	17	0.65	EDMONDS, Tim			23	18	1.28	EDMONDS, Tim		38	18	2.11
	TOWNSEND, Mike	11	18	0.61	HYDE, Nathan			19	18	1.06	HYDE, Nathan		27	18	1.50
	REES, Ashley	9	18	0.50	REES, Ashley			13	18	0.72	REES, Ashley		22	18	1.22
	HYDE, Nathan	8	18	0.44	TOWNSEND, Mike			11	18	0.61	TOWNSEND, Mike		22	18	1.22
HART, Joel	4	13	0.31	HART, Joel			7	13	0.54	HART, Joel		11	13	0.85	
				McFARLIN, Paul			2	8	0.25	McFARLIN, Paul		2	8	0.25	
Assists	Num	G	Avg	Steals			Num	G	Avg	Scoring		Num	G	Avg	
	KENCH, Jeremy	58	17	3.41	KENCH, Jeremy			49	17	2.88	TRAMMELL, Dennis		460	18	25.6
	SPARN, Sam	46	18	2.56	SPARN, Sam			31	18	1.72	KENCH, Jeremy		318	17	18.7
	TRAMMELL, Dennis	32	18	1.78	TRAMMELL, Dennis			31	18	1.72	SPARN, Sam		258	18	14.3
	MORRISON, Mark	22	18	1.22	EDMONDS, Tim			27	18	1.50	EDMONDS, Tim		139	18	7.72
	REES, Ashley	16	18	0.89	TOWNSEND, Mike			8	18	0.44	MORRISON, Mark		133	18	7.39
	EDMONDS, Tim	14	18	0.78	HYDE, Nathan			7	18	0.39	MANAHI, Rewi		126	18	7.00
	MANAHI, Rewi	11	18	0.61	MANAHI, Rewi			6	18	0.33	HART, Joel		63	13	4.85
	HYDE, Nathan	6	18	0.33	MORRISON, Mark			5	18	0.28	HYDE, Nathan		33	18	1.83
	HART, Joel	4	13	0.31	HART, Joel			5	13	0.38	TOWNSEND, Mike		27	18	1.50
TOWNSEND, Mike	2	18	0.11	REES, Ashley			2	18	0.11	REES, Ashley		21	18	1.17	
				McFARLIN, Paul			2	8	0.25	HAWKE, Tony		2	3	0.67	
										McFARLIN, Paul		1	8	0.13	
Blocks	Num	G	Avg	Turn Overs			Num	G	Avg	Fouls		Off	Pers	Total	
	SPARN, Sam	8	18	0.44	KENCH, Jeremy			57	17	3.35	KENCH, Jeremy		7	53	60
	TOWNSEND, Mike	4	18	0.22	SPARN, Sam			40	18	2.22	SPARN, Sam		4	56	60
	MORRISON, Mark	3	18	0.17	TRAMMELL, Dennis			38	18	2.11	MANAHI, Rewi		1	42	43
	HYDE, Nathan	3	18	0.17	MORRISON, Mark			29	18	1.61	TRAMMELL, Dennis		6	33	39
	EDMONDS, Tim	2	18	0.11	REES, Ashley			20	18	1.11	MORRISON, Mark		4	32	36
	REES, Ashley	1	18	0.06	EDMONDS, Tim			17	18	0.94	HYDE, Nathan		3	32	35
	KENCH, Jeremy	1	17	0.06	MANAHI, Rewi			17	18	0.94	EDMONDS, Tim		1	33	34
					TOWNSEND, Mike			12	18	0.67	TOWNSEND, Mike		1	21	22
					HYDE, Nathan			12	18	0.67	REES, Ashley		0	22	22
				HART, Joel			12	13	0.92	HART, Joel		2	13	15	
				McFARLIN, Paul			1	8	0.13						
Charges Taken	Num	G	Avg	Productivity			Value	G	Avg	Def Assist		Num	G	Avg	
	EDMONDS, Tim	7	18	0.39	TRAMMELL, Dennis			553	18	30.7					
	KENCH, Jeremy	6	17	0.35	SPARN, Sam			511	18	28.4					
	SPARN, Sam	4	18	0.22	KENCH, Jeremy			477	17	28.1					
	REES, Ashley	3	18	0.17	MANAHI, Rewi			208	18	11.6					
	MORRISON, Mark	2	18	0.11	EDMONDS, Tim			186	18	10.3					
	HYDE, Nathan	2	18	0.11	MORRISON, Mark			159	18	8.83					
	MANAHI, Rewi	2	18	0.11	HYDE, Nathan			71.0	18	3.94					
	TRAMMELL, Dennis	1	18	0.06	TOWNSEND, Mike			56.0	18	3.11					
					REES, Ashley			45.0	18	2.50					
				HART, Joel			39.0	13	3.00						
				McFARLIN, Paul			3.50	8	0.44						
				HAWKE, Tony			2.00	3	0.67						

Scenic Circle Canterbury Rams Basketball - Team Shot Chart
Scenic Circle Canterbury Rams

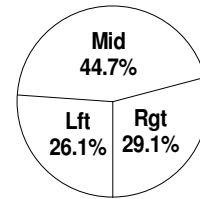


Shot Summary	M/A	%	PTS
3Pt FG	116/356	32.6%	348
2Pt FG	481/945	50.9%	962
Layups - L	64/89	71.9%	128
Layups - R	78/106	73.6%	156
Dunks	12/13	92.3%	24
Putbacks	15/22	68.2%	30
Overall Shooting	597/1301	45.9%	1310
Free Throws	271/389	69.7%	271
Total Points			1581

Scoring Distribution



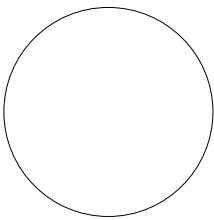
Scoring Locations



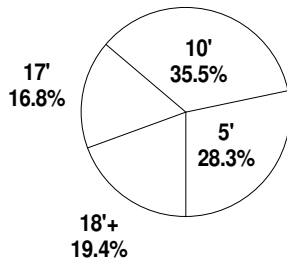
Sea Totals	G	FG	FGA	FG%	3Pt	3PA	3P%	FT	FTA	FT%	PTS	ORB	DRB	TR	PF	AST	TO	BS	ST	DA	P/S
Scenic Circle Cant	18	597	1301	45.9	116	356	32.6	271	389	69.7	1581	248	451	699	366	211	267	22	176	0	1.06
Opponents	18	617	1255	49.2	119	375	31.7	278	411	67.6	1631	257	512	769	331	298	316	70	150	0	1.12

Sea Average	G	FG	FGA	FG%	3Pt	3PA	3P%	FT	FTA	FT%	PTS	ORB	DRB	TR	PF	AST	TO	BS	ST	DA
Scenic Circle Cant	18	26.7	52.5	45.9	6.44	19.8	32.6	15.1	21.6	69.7	87.8	13.8	25.1	38.8	20.3	11.7	14.8	1.22	9.78	0.00
Opponents	18	27.7	48.9	49.2	6.61	20.8	31.7	15.4	22.8	67.6	90.6	14.3	28.4	42.7	18.4	16.6	17.6	3.89	8.33	0.00

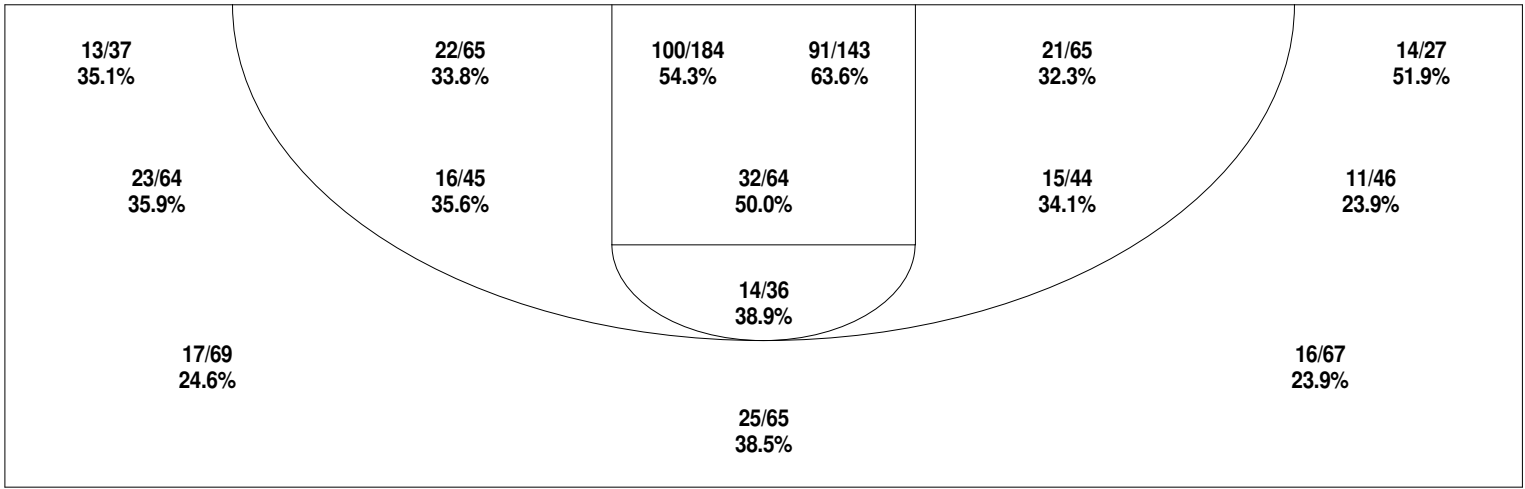
Scoring Breakdown



Scoring Range

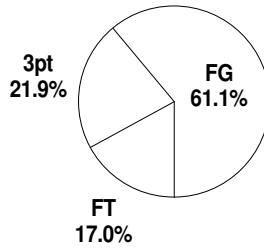


Scenic Circle Canterbury Rams Basketball - Opponent Shot Chart
Scenic Circle Canterbury Rams

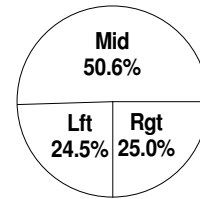


Shot Summary	M/A	%	PTS
3Pt FG	119/375	31.7%	357
2Pt FG	498/880	56.6%	996
Layups - L	60/79	75.9%	120
Layups - R	77/94	81.9%	154
Dunks	33/34	97.1%	66
Putbacks	17/27	63.0%	34
Overall Shooting	617/1255	49.2%	1353
Free Throws	278/411	67.6%	278
Total Points			1631

Scoring Distribution



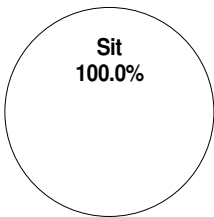
Scoring Locations



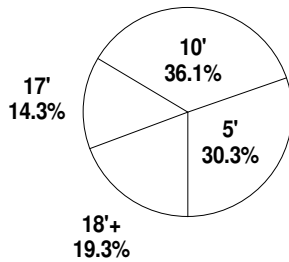
Sea Totals	G	FG	FGA	FG%	3Pt	3PA	3P%	FT	FTA	FT%	PTS	ORB	DRB	TR	PF	AST	TO	BS	ST	DA	P/S
Scenic Circle Cant	18	597	1301	45.9	116	356	32.6	271	389	69.7	1581	248	451	699	366	211	267	22	176	0	1.06
Opponents	18	617	1255	49.2	119	375	31.7	278	411	67.6	1631	257	512	769	331	298	316	70	150	0	1.12

Sea Average	G	FG	FGA	FG%	3Pt	3PA	3P%	FT	FTA	FT%	PTS	ORB	DRB	TR	PF	AST	TO	BS	ST	DA
Scenic Circle Cant	18	26.7	52.5	45.9	6.44	19.8	32.6	15.1	21.6	69.7	87.8	13.8	25.1	38.8	20.3	11.7	14.8	1.22	9.78	0.00
Opponents	18	27.7	48.9	49.2	6.61	20.8	31.7	15.4	22.8	67.6	90.6	14.3	28.4	42.7	18.4	16.6	17.6	3.89	8.33	0.00

Scoring Breakdown



Scoring Range



CyberSports for Basketball - Offensive Lineup Combination Analysis

Scenic Circle Canterbury Rams

Most Often Used Lineup:	8-J Kench, 10-M Morrison, 11-S Sparn, 30-D Trammell, 33-R Manahi
Most Productive Offensive Lineup:	8-J Kench, 10-M Morrison, 11-S Sparn, 30-D Trammell, 33-R Manahi
Most Productive Rebounding Lineup:	6-A Rees, 7-T Edmonds, 11-S Sparn, 30-D Trammell, 33-R Manahi
Best Defensive Combination:	6-A Rees, 7-T Edmonds, 11-S Sparn, 30-D Trammell, 33-R Manahi
Best Lineup to Force Turnovers:	7-T Edmonds, 8-J Kench, 11-S Sparn, 14-M Townsend, 30-D Trammell
Best Overall Lineup:	7-T Edmonds, 8-J Kench, 11-S Sparn, 30-D Trammell, 33-R Manahi
Best Free Throw Shooting Lineup:	8-J Kench, 10-M Morrison, 20-N Hyde, 30-D Trammell, 33-R Manahi

Lineups Sorted by Playing Time

Players	Time	Pts
8-J Kench, 10-M Morrison, 11-S Sparn, 30-D Trammell, 33-R Manahi	106.02	+23
8-J Kench, 10-M Morrison, 11-S Sparn, 20-N Hyde, 30-D Trammell	67.58	-33
7-T Edmonds, 8-J Kench, 10-M Morrison, 11-S Sparn, 30-D Trammell	38.30	+16
7-T Edmonds, 8-J Kench, 11-S Sparn, 30-D Trammell, 33-R Manahi	32.65	+13
7-T Edmonds, 8-J Kench, 11-S Sparn, 20-N Hyde, 30-D Trammell	32.58	-6
7-T Edmonds, 8-J Kench, 10-M Morrison, 30-D Trammell, 33-R Manahi	26.48	-11
6-A Rees, 7-T Edmonds, 11-S Sparn, 30-D Trammell, 33-R Manahi	25.95	+18
8-J Kench, 10-M Morrison, 11-S Sparn, 14-M Townsend, 30-D Trammell	25.62	+1
7-T Edmonds, 8-J Kench, 11-S Sparn, 14-M Townsend, 30-D Trammell	22.47	+8
8-J Kench, 10-M Morrison, 11-S Sparn, 30-D Trammell, 53-J Hart	21.58	-1

Lineups Sorted by Points per Minute

Players	PPM	Norm	Pts	Time
6-A Rees, 7-T Edmonds, 11-S Sparn, 30-D Trammell, 33-R Manahi	+0.69	+27.75	+18	25.95
7-T Edmonds, 8-J Kench, 10-M Morrison, 11-S Sparn, 30-D Trammell	+0.42	+16.71	+16	38.30
7-T Edmonds, 8-J Kench, 11-S Sparn, 30-D Trammell, 33-R Manahi	+0.40	+15.93	+13	32.65
7-T Edmonds, 8-J Kench, 11-S Sparn, 14-M Townsend, 30-D Trammell	+0.36	+14.24	+8	22.47
8-J Kench, 10-M Morrison, 11-S Sparn, 30-D Trammell, 33-R Manahi	+0.22	+8.68	+23	106.02
8-J Kench, 10-M Morrison, 11-S Sparn, 14-M Townsend, 30-D Trammell	+0.04	+1.56	+1	25.62
8-J Kench, 10-M Morrison, 11-S Sparn, 30-D Trammell, 53-J Hart	-0.05	-1.85	-1	21.58
7-T Edmonds, 8-J Kench, 11-S Sparn, 20-N Hyde, 30-D Trammell	-0.18	-7.37	-6	32.58
7-T Edmonds, 8-J Kench, 10-M Morrison, 30-D Trammell, 33-R Manahi	-0.42	-16.61	-11	26.48
8-J Kench, 10-M Morrison, 11-S Sparn, 20-N Hyde, 30-D Trammell	-0.49	-19.53	-33	67.58

Lineups Sorted by Rebounds per Minute

Players	RPM	Norm	Reb	Time
6-A Rees, 7-T Edmonds, 11-S Sparn, 30-D Trammell, 33-R Manahi	+0.31	+12.33	+8	25.95
7-T Edmonds, 8-J Kench, 11-S Sparn, 30-D Trammell, 33-R Manahi	+0.21	+8.58	+7	32.65
7-T Edmonds, 8-J Kench, 11-S Sparn, 20-N Hyde, 30-D Trammell	+0.09	+3.68	+3	32.58
7-T Edmonds, 8-J Kench, 11-S Sparn, 14-M Townsend, 30-D Trammell	+0.00	+0.00	+0	22.47
8-J Kench, 10-M Morrison, 11-S Sparn, 14-M Townsend, 30-D Trammell	-0.08	-3.12	-2	25.62
8-J Kench, 10-M Morrison, 11-S Sparn, 30-D Trammell, 33-R Manahi	-0.08	-3.40	-9	106.02
7-T Edmonds, 8-J Kench, 10-M Morrison, 11-S Sparn, 30-D Trammell	-0.16	-6.27	-6	38.30
8-J Kench, 10-M Morrison, 11-S Sparn, 30-D Trammell, 53-J Hart	-0.19	-7.41	-4	21.58
7-T Edmonds, 8-J Kench, 10-M Morrison, 30-D Trammell, 33-R Manahi	-0.23	-9.06	-6	26.48
8-J Kench, 10-M Morrison, 11-S Sparn, 20-N Hyde, 30-D Trammell	-0.24	-9.47	-16	67.58

Total time captured in lineups:	399.23
Productive scoring minutes:	251.00
Productive rebounding minutes:	91.18
Productive scoring percentage:	62.87%
Productive rebounding percentage:	22.84%

CyberSports for Basketball - Defensive Lineup Combination Analysis

Scenic Circle Canterbury Rams

Lineup Sorted by Defensive Possessions

Players	Oppo Pts	Def Poss
8-J Kench, 10-M Morrison, 11-S Sparr, 30-D Trammell, 33-R Manahi	220	289
8-J Kench, 10-M Morrison, 11-S Sparr, 20-N Hyde, 30-D Trammell	164	168
7-T Edmonds, 8-J Kench, 10-M Morrison, 11-S Sparr, 30-D Trammell	76	93
6-A Rees, 7-T Edmonds, 11-S Sparr, 30-D Trammell, 33-R Manahi	46	90
7-T Edmonds, 8-J Kench, 11-S Sparr, 30-D Trammell, 33-R Manahi	62	78
7-T Edmonds, 8-J Kench, 10-M Morrison, 30-D Trammell, 33-R Manahi	77	76
7-T Edmonds, 8-J Kench, 11-S Sparr, 20-N Hyde, 30-D Trammell	77	74
8-J Kench, 10-M Morrison, 11-S Sparr, 14-M Townsend, 30-D Trammell	51	62
8-J Kench, 10-M Morrison, 11-S Sparr, 30-D Trammell, 53-J Hart	52	56
7-T Edmonds, 8-J Kench, 11-S Sparr, 14-M Townsend, 30-D Trammell	51	54

Lineup Sorted by Points per Possession Allowed

Players	Pts/ Poss	Def Poss
6-A Rees, 7-T Edmonds, 11-S Sparr, 30-D Trammell, 33-R Manahi	0.51	90
8-J Kench, 10-M Morrison, 11-S Sparr, 30-D Trammell, 33-R Manahi	0.76	289
7-T Edmonds, 8-J Kench, 11-S Sparr, 30-D Trammell, 33-R Manahi	0.79	78
7-T Edmonds, 8-J Kench, 10-M Morrison, 11-S Sparr, 30-D Trammell	0.82	93
8-J Kench, 10-M Morrison, 11-S Sparr, 14-M Townsend, 30-D Trammell	0.82	62
8-J Kench, 10-M Morrison, 11-S Sparr, 30-D Trammell, 53-J Hart	0.93	56
7-T Edmonds, 8-J Kench, 11-S Sparr, 14-M Townsend, 30-D Trammell	0.94	54
8-J Kench, 10-M Morrison, 11-S Sparr, 20-N Hyde, 30-D Trammell	0.98	168
7-T Edmonds, 8-J Kench, 10-M Morrison, 30-D Trammell, 33-R Manahi	1.01	76
7-T Edmonds, 8-J Kench, 11-S Sparr, 20-N Hyde, 30-D Trammell	1.04	74

Lineup Sorted by Defensive Efficiency (Stops)

Players	Def Eff	Def Stops	Def Poss
7-T Edmonds, 8-J Kench, 11-S Sparr, 30-D Trammell, 33-R Manahi	0.49	38	78
8-J Kench, 10-M Morrison, 11-S Sparr, 14-M Townsend, 30-D Trammell	0.48	30	62
6-A Rees, 7-T Edmonds, 11-S Sparr, 30-D Trammell, 33-R Manahi	0.48	43	90
7-T Edmonds, 8-J Kench, 11-S Sparr, 14-M Townsend, 30-D Trammell	0.48	26	54
8-J Kench, 10-M Morrison, 11-S Sparr, 30-D Trammell, 33-R Manahi	0.39	114	289
7-T Edmonds, 8-J Kench, 10-M Morrison, 11-S Sparr, 30-D Trammell	0.39	36	93
8-J Kench, 10-M Morrison, 11-S Sparr, 30-D Trammell, 53-J Hart	0.38	21	56
8-J Kench, 10-M Morrison, 11-S Sparr, 20-N Hyde, 30-D Trammell	0.38	63	168
7-T Edmonds, 8-J Kench, 11-S Sparr, 20-N Hyde, 30-D Trammell	0.36	27	74
7-T Edmonds, 8-J Kench, 10-M Morrison, 30-D Trammell, 33-R Manahi	0.36	27	76

Lineup Sorted by Percentage of Ball Handling Errors Forced

Players	% BH Err	Oppo TO	Def Poss
7-T Edmonds, 8-J Kench, 11-S Sparr, 14-M Townsend, 30-D Trammell	0.28	15	54
7-T Edmonds, 8-J Kench, 11-S Sparr, 30-D Trammell, 33-R Manahi	0.23	18	78
7-T Edmonds, 8-J Kench, 10-M Morrison, 30-D Trammell, 33-R Manahi	0.21	16	76
8-J Kench, 10-M Morrison, 11-S Sparr, 20-N Hyde, 30-D Trammell	0.17	28	168
8-J Kench, 10-M Morrison, 11-S Sparr, 14-M Townsend, 30-D Trammell	0.16	10	62
7-T Edmonds, 8-J Kench, 10-M Morrison, 11-S Sparr, 30-D Trammell	0.16	15	93
7-T Edmonds, 8-J Kench, 11-S Sparr, 20-N Hyde, 30-D Trammell	0.16	12	74
6-A Rees, 7-T Edmonds, 11-S Sparr, 30-D Trammell, 33-R Manahi	0.16	14	90
8-J Kench, 10-M Morrison, 11-S Sparr, 30-D Trammell, 53-J Hart	0.14	8	56
8-J Kench, 10-M Morrison, 11-S Sparr, 30-D Trammell, 33-R Manahi	0.13	39	289

CyberSports for Basketball - Individual Lineup Combination Analysis

Scenic Circle Canterbury Rams

Sorted by Playing Time

Players	Time
#30 Dennis Trammell	399.23
#8 Jeremy Kench	373.28
#11 Sam Sparr	372.75
#10 Mark Morrison	285.58
#33 Rewi Manahi	191.10
#7 Tim Edmonds	178.43
#20 Nathan Hyde	100.17
#14 Mike Townsend	48.08
#6 Ashley Rees	25.95
#53 Joel Hart	21.58

Sorted by Points per Possession Allowed

Players	Pts/ Poss	Oppo Pts	Def Poss
#6 Ashley Rees	0.51	46	90
#33 Rewi Manahi	0.76	405	533
#11 Sam Sparr	0.83	799	964
#7 Tim Edmonds	0.84	389	465
#30 Dennis Trammell	0.84	876	1040
#10 Mark Morrison	0.86	640	744
#8 Jeremy Kench	0.87	830	950
#14 Mike Townsend	0.88	102	116
#53 Joel Hart	0.93	52	56
#20 Nathan Hyde	1.00	241	242

Sorted by Point Differential per Minute

Players	Pts/		Pts	
	Min	Norm	Diff	Time
#6 Ashley Rees	+0.69	+27.75	+18	25.95
#33 Rewi Manahi	+0.23	+9.00	+43	191.10
#7 Tim Edmonds	+0.21	+8.52	+38	178.43
#14 Mike Townsend	+0.19	+7.49	+9	48.08
#11 Sam Sparr	+0.10	+4.19	+39	372.75
#30 Dennis Trammell	+0.07	+2.81	+28	399.23
#8 Jeremy Kench	+0.03	+1.07	+10	373.28
#10 Mark Morrison	-0.02	-0.70	-5	285.58
#53 Joel Hart	-0.05	-1.85	-1	21.58
#20 Nathan Hyde	-0.39	-15.57	-39	100.17

Sorted by Defensive Efficiency (Stops)

Players	Def Eff	Def Stops	Def Poss
	#6 Ashley Rees	0.48	43
#14 Mike Townsend	0.48	56	116
#7 Tim Edmonds	0.42	197	465
#33 Rewi Manahi	0.42	222	533
#11 Sam Sparr	0.41	398	964
#30 Dennis Trammell	0.41	425	1040
#8 Jeremy Kench	0.40	382	950
#10 Mark Morrison	0.39	291	744
#53 Joel Hart	0.38	21	56
#20 Nathan Hyde	0.37	90	242

Sorted by Rebound Differential per Minute

Players	Reb/		Reb	
	Min	Norm	Diff	Time
#6 Ashley Rees	+0.31	+12.33	+8	25.95
#7 Tim Edmonds	+0.03	+1.35	+6	178.43
#33 Rewi Manahi	+0.00	+0.00	+0	191.10
#14 Mike Townsend	-0.04	-1.66	-2	48.08
#11 Sam Sparr	-0.05	-2.04	-19	372.75
#30 Dennis Trammell	-0.06	-2.50	-25	399.23
#8 Jeremy Kench	-0.09	-3.54	-33	373.28
#20 Nathan Hyde	-0.13	-5.19	-13	100.17
#10 Mark Morrison	-0.15	-6.02	-43	285.58
#53 Joel Hart	-0.19	-7.41	-4	21.58

Sorted by % Of Ball Handling Errors Forced

Players	% BH Err	Oppo TO	Def Poss
	#14 Mike Townsend	0.22	25
#7 Tim Edmonds	0.19	90	465
#33 Rewi Manahi	0.16	87	533
#11 Sam Sparr	0.16	159	964
#30 Dennis Trammell	0.17	175	1040
#8 Jeremy Kench	0.17	161	950
#20 Nathan Hyde	0.17	40	242
#6 Ashley Rees	0.16	14	90
#10 Mark Morrison	0.16	116	744
#53 Joel Hart	0.14	8	56

Scenic Circle Canterbury Rams Basketball - Individual Season Summary

Ashley Rees

Opponent	FG	FG%	3Pt	3Pt%	FT	FT%	PTS	ORB	DRB	TR	PF	AST	TO	BS	ST	DA	JW	Prod	SR	MIN
Otago Nuggets	1/2	50.0	0/1	0.00	0/0	0.00	2	0	2	2	3	2	1	0	0	0	0	7.50	0.00	15:51
0800 Easy LPG Hawkes Bay Hawks	0/1	0.00	0/0	0.00	2/2	100	2	0	1	1	1	0	1	0	0	0	0	1.00	0.00	9:13
Appliance Shed Harbour Heat	1/2	50.0	0/0	0.00	0/0	0.00	2	1	1	2	1	0	1	0	0	0	0	2.50	0.00	10:28
GI Juice Auckland Stars	0/3	0.00	0/1	0.00	0/0	0.00	0	2	0	2	1	1	2	1	0	0	0	2.50	0.00	9:26
GI Juice Auckland Stars	0/1	0.00	0/0	0.00	1/2	50.0	1	0	0	0	2	1	1	0	0	0	0	0.00	0.00	6:34
Appliance Shed Harbour Heat	0/0	0.00	0/0	0.00	0/0	0.00	0	0	0	0	1	1	1	0	0	0	0	1.00	0.00	8:46
NBS Nelson Giants	0/2	0.00	0/1	0.00	1/2	50.0	1	0	1	1	2	0	2	0	0	0	0	-3.50	0.00	12:10
NZCT Taranaki Mountain Airs	1/1	100	0/0	0.00	1/2	50.0	3	1	0	1	2	3	2	0	0	0	0	8.00	0.00	14:12
St Laurence Wellington Saints	0/3	0.00	0/1	0.00	0/0	0.00	0	0	0	0	1	0	0	0	0	0	0	-3.00	0.00	5:58
Waikato Pistons	2/3	66.7	0/1	0.00	1/4	25.0	5	2	2	4	1	4	3	0	0	0	0	12.5	0.00	23:27
Waikato Pistons	0/0	0.00	0/0	0.00	0/0	0.00	0	0	1	1	0	0	1	0	0	0	0	0.00	0.00	8:18
Inspire Net Manawatu Jets	0/1	0.00	0/1	0.00	0/0	0.00	0	0	0	0	2	2	1	0	0	0	0	2.50	0.00	8:16
Otago Nuggets	1/3	33.3	0/0	0.00	0/0	0.00	2	0	0	0	1	0	0	0	0	0	0	0.00	0.00	7:21
NBS Nelson Giants	0/1	0.00	0/0	0.00	0/0	0.00	0	1	0	1	0	0	1	0	0	0	0	-1.00	0.00	4:45
0800 Easy LPG Hawkes Bay Hawks	0/0	0.00	0/0	0.00	0/0	0.00	0	0	0	0	1	0	0	0	0	0	0	0.00	0.00	4:04
Inspire Net Manawatu Jets	1/2	50.0	0/0	0.00	0/0	0.00	2	0	0	0	0	1	0	0	1	0	0	6.00	0.00	7:00
NZCT Taranaki Mountain Airs	0/1	0.00	0/0	0.00	1/2	50.0	1	1	3	4	1	1	2	0	0	0	0	4.50	0.00	8:14
St Laurence Wellington Saints	0/1	0.00	0/1	0.00	0/0	0.00	0	1	2	3	2	0	1	0	1	0	0	4.50	0.00	8:57
Totals	7/27	25.9	0/7	0.00	7/14	50.0	21	9	13	22	22	16	20	1	2	0	0	45.0		173
Game Highs	2/3	100	0/1	0.00	2/2	100	5	2	3	4	3	4	3	1	1	0	0	12.5	0.00	23:27
	FGM	FGA	3PM	3PA	FTM	FTA	PTS	ORB	DRB	TR	PF	AST	TO	BS	ST	DA	JW	Prod		MIN
Per Game	0.39	1.50	0.00	0.39	0.39	0.78	1.17	0.50	0.72	1.22	1.22	0.89	1.11	0.06	0.11	0.00		2.50		9:36
Per Minute	0.04	0.16	0.00	0.04	0.04	0.08	0.12	0.05	0.08	0.13	0.13	0.09	0.12	0.01	0.01	0.00		0.26		
Normalized	1.62	6.24	0.00	1.62	1.62	3.24	4.86	2.08	3.01	5.09	5.09	3.70	4.62	0.23	0.46	0.00		10.4		

Scenic Circle Canterbury Rams Basketball - Individual Season Summary																				
Tim Edmonds																				
Opponent	FG	FG%	3Pt	3Pt%	FT	FT%	PTS	ORB	DRB	TR	PF	AST	TO	BS	ST	DA	JW	Prod	SR	MIN
Otago Nuggets	4/11	36.4	1/4	25.0	0/0	0.00	9	1	2	3	3	0	0	1	2	0	0	14.5	0.00	23:06
0800 Easy LPG Hawkes Bay Hawks	1/4	25.0	0/2	0.00	0/0	0.00	2	1	2	3	2	2	0	0	2	0	0	13.5	0.00	20:27
Appliance Shed Harbour Heat	4/12	33.3	2/4	50.0	6/9	66.7	16	3	2	5	2	2	1	0	1	0	0	18.5	0.00	20:47
GI Juice Auckland Stars	2/6	33.3	1/4	25.0	1/2	50.0	6	0	1	1	3	2	1	0	0	0	0	6.00	0.00	21:12
GI Juice Auckland Stars	0/2	0.00	0/1	0.00	0/0	0.00	0	1	1	2	2	1	2	0	1	0	0	3.00	0.00	7:13
Appliance Shed Harbour Heat	2/5	40.0	0/2	0.00	0/2	0.00	4	1	1	2	0	0	2	0	2	0	0	4.00	0.00	14:16
NBS Nelson Giants	0/1	0.00	0/1	0.00	0/0	0.00	0	1	0	1	1	0	1	0	0	0	0	-1.00	0.00	1:58
NZCT Taranaki Mountain Airs	1/2	50.0	1/2	50.0	3/4	75.0	6	0	0	0	4	0	0	0	1	0	0	6.50	0.00	7:19
St Laurence Wellington Saints	1/2	50.0	1/2	50.0	0/0	0.00	3	0	0	0	2	1	0	0	0	0	0	4.50	0.00	9:43
Waikato Pistons	2/7	28.6	0/2	0.00	0/0	0.00	4	0	7	7	1	0	1	0	0	0	0	8.00	0.00	17:58
Waikato Pistons	5/11	45.5	0/5	0.00	0/2	0.00	10	1	1	2	1	1	1	0	6	0	0	21.0	0.00	29:39
Inspire Net Manawatu Jets	7/16	43.8	5/12	41.7	0/3	0.00	19	1	1	2	3	0	1	0	3	0	0	16.0	0.00	29:24
Otago Nuggets	2/6	33.3	0/4	0.00	0/0	0.00	4	1	0	1	1	2	0	0	4	0	0	16.5	0.00	23:07
NBS Nelson Giants	4/8	50.0	1/3	33.3	2/2	100	11	2	1	3	2	0	0	0	1	0	0	14.0	0.00	18:48
0800 Easy LPG Hawkes Bay Hawks	3/6	50.0	1/3	33.3	2/2	100	9	0	2	2	0	0	0	0	0	0	0	9.00	0.00	15:31
Inspire Net Manawatu Jets	5/8	62.5	1/3	33.3	1/2	50.0	12	0	1	1	1	1	1	0	0	0	0	10.5	0.00	14:54
NZCT Taranaki Mountain Airs	2/9	22.2	1/6	16.7	2/2	100	7	1	1	2	1	1	3	0	1	0	0	3.50	0.00	22:54
St Laurence Wellington Saints	7/14	50.0	1/6	16.7	2/4	50.0	17	1	0	1	5	1	3	1	3	0	0	18.0	0.00	38:49
Totals	52/130	40.0	16/66	24.2	19/34	55.9	139	15	23	38	34	14	17	2	27	0	0	186		337
Game Highs	7/16	62.5	5/12	50.0	6/9	100	19	3	7	7	5	2	3	1	6	0	0	21.0	0.00	38:49
	FGM	FGA	3PM	3PA	FTM	FTA	PTS	ORB	DRB	TR	PF	AST	TO	BS	ST	DA	JW	Prod		MIN
Per Game	2.89	7.22	0.89	3.67	1.06	1.89	7.72	0.83	1.28	2.11	1.89	0.78	0.94	0.11	1.50	0.00		10.3		18:43
Per Minute	0.15	0.39	0.05	0.20	0.06	0.10	0.41	0.04	0.07	0.11	0.10	0.04	0.05	0.01	0.08	0.00		0.55		
Normalized	6.17	15.4	1.90	7.83	2.25	4.03	16.5	1.78	2.73	4.51	4.03	1.66	2.02	0.24	3.20	0.00		22.1		

Scenic Circle Canterbury Rams Basketball - Individual Season Summary

Jeremy Kench

Opponent	FG	FG%	3Pt	3Pt%	FT	FT%	PTS	ORB	DRB	TR	PF	AST	TO	BS	ST	DA	JW	Prod	SR	MIN
Otago Nuggets	3/9	33.3	0/1	0.00	6/8	75.0	12	2	7	9	4	6	3	0	3	0	0	35.5	0.00	28:27
0800 Easy LPG Hawkes Bay Hawks	5/8	62.5	0/1	0.00	2/5	40.0	12	2	1	3	5	5	3	0	4	0	0	28.5	0.00	23:37
Appliance Shed Harbour Heat	7/10	70.0	0/1	0.00	4/6	66.7	18	0	6	6	3	3	1	0	4	0	0	38.0	0.00	30:57
GI Juice Auckland Stars	7/10	70.0	2/4	50.0	2/5	40.0	18	1	4	5	4	5	6	0	5	0	0	35.5	0.00	30:46
GI Juice Auckland Stars	9/13	69.2	3/6	50.0	9/11	81.8	30	1	3	4	4	5	5	0	5	0	0	47.5	0.00	33:26
Appliance Shed Harbour Heat	4/8	50.0	1/2	50.0	2/2	100	11	0	2	2	0	2	4	1	3	0	0	19.5	0.00	31:14
NBS Nelson Giants	2/9	22.2	0/3	0.00	2/2	100	6	0	2	2	4	5	2	0	1	0	0	14.0	0.00	27:50
NZCT Taranaki Mountain Airs	10/14	71.4	2/3	66.7	4/5	80.0	26	0	0	0	4	0	1	0	2	0	0	24.5	0.00	25:48
St Laurence Wellington Saints	6/12	50.0	0/2	0.00	4/5	80.0	16	0	2	2	4	4	4	0	2	0	0	21.0	0.00	34:02
Waikato Pistons	6/12	50.0	1/3	33.3	4/7	57.1	17	1	3	4	3	3	3	0	4	0	0	27.0	0.00	24:43
Inspire Net Manawatu Jets	4/11	36.4	0/3	0.00	4/5	80.0	12	1	2	3	4	4	1	0	2	0	0	22.0	0.00	31:44
Otago Nuggets	10/16	62.5	2/3	66.7	5/9	55.6	27	0	2	2	1	1	6	0	3	0	0	21.0	0.00	32:41
NBS Nelson Giants	10/17	58.8	1/3	33.3	3/4	75.0	24	2	2	4	1	3	2	0	4	0	0	36.5	0.00	35:15
0800 Easy LPG Hawkes Bay Hawks	5/16	31.3	1/9	11.1	6/7	85.7	17	0	5	5	5	2	4	0	2	0	0	16.5	0.00	35:56
Inspire Net Manawatu Jets	8/14	57.1	2/5	40.0	3/3	100	21	0	5	5	4	6	7	0	2	0	0	32.0	0.00	33:00
NZCT Taranaki Mountain Airs	5/12	41.7	2/3	66.7	3/4	75.0	15	0	6	6	5	1	1	0	2	0	0	22.0	0.00	29:24
St Laurence Wellington Saints	12/23	52.2	5/10	50.0	7/9	77.8	36	1	5	6	5	3	4	0	1	0	0	36.0	0.00	47:04
Totals	113/214	52.8	22/62	35.5	70/97	72.2	318	11	57	68	60	58	57	1	49	0	0	477		535
Game Highs	12/23	71.4	5/10	66.7	9/11	100	36	2	7	9	5	6	7	1	5	0	0	47.5	0.00	47:04
	FGM	FGA	3PM	3PA	FTM	FTA	PTS	ORB	DRB	TR	PF	AST	TO	BS	ST	DA	JW	Prod		MIN
Per Game	6.65	12.6	1.29	3.65	4.12	5.71	18.7	0.65	3.35	4.00	3.53	3.41	3.35	0.06	2.88	0.00		28.1		31:31
Per Minute	0.21	0.40	0.04	0.12	0.13	0.18	0.59	0.02	0.11	0.13	0.11	0.11	0.11	0.00	0.09	0.00		0.89		
Normalized	8.43	16.0	1.64	4.63	5.22	7.24	23.7	0.82	4.25	5.08	4.48	4.33	4.25	0.07	3.66	0.00		35.6		

Scenic Circle Canterbury Rams Basketball - Individual Season Summary																				
Mark Morrison																				
Opponent	FG	FG%	3Pt	3Pt%	FT	FT%	PTS	ORB	DRB	TR	PF	AST	TO	BS	ST	DA	JW	Prod	SR	MIN
Otago Nuggets	2/7	28.6	0/2	0.00	1/2	50.0	5	2	3	5	3	2	1	1	0	0	0	13.0	0.00	27:37
0800 Easy LPG Hawkes Bay Hawks	4/9	44.4	3/6	50.0	0/0	0.00	11	1	0	1	4	1	2	0	1	0	0	9.50	0.00	27:44
Appliance Shed Harbour Heat	2/6	33.3	0/2	0.00	1/1	100	5	1	3	4	0	0	2	0	0	0	0	4.00	0.00	19:33
GI Juice Auckland Stars	0/6	0.00	0/2	0.00	1/2	50.0	1	0	1	1	0	1	4	0	0	0	0	-8.00	0.00	17:13
GI Juice Auckland Stars	5/9	55.6	1/2	50.0	0/0	0.00	11	0	3	3	1	2	2	0	0	0	0	13.5	0.00	34:53
Appliance Shed Harbour Heat	1/3	33.3	0/1	0.00	4/4	100	6	1	3	4	1	1	3	0	0	0	0	8.00	0.00	23:52
NBS Nelson Giants	5/13	38.5	2/6	33.3	1/2	50.0	13	2	6	8	4	0	1	0	1	0	0	17.0	0.00	38:02
NZCT Taranaki Mountain Airs	5/9	55.6	1/2	50.0	2/2	100	13	1	4	5	2	3	1	0	0	0	0	22.5	0.00	25:39
St Laurence Wellington Saints	2/8	25.0	1/5	20.0	0/0	0.00	5	0	5	5	4	1	2	0	1	0	0	8.50	0.00	36:49
Waikato Pistons	2/7	28.6	1/3	33.3	1/1	100	6	0	3	3	1	1	3	0	0	0	0	3.50	0.00	28:54
Waikato Pistons	3/6	50.0	1/3	33.3	1/2	50.0	8	0	3	3	0	0	0	0	0	0	0	8.50	0.00	25:13
Inspire Net Manawatu Jets	3/5	60.0	1/3	33.3	0/0	0.00	7	0	2	2	2	2	0	0	0	0	0	13.0	0.00	16:53
Otago Nuggets	4/12	33.3	1/4	25.0	0/0	0.00	9	1	3	4	2	1	2	0	0	0	0	6.50	0.00	28:40
NBS Nelson Giants	1/6	16.7	0/3	0.00	0/0	0.00	2	1	1	2	2	2	0	0	1	0	0	7.50	0.00	28:10
0800 Easy LPG Hawkes Bay Hawks	4/11	36.4	0/3	0.00	0/0	0.00	8	1	3	4	4	1	2	1	1	0	0	12.0	0.00	35:12
Inspire Net Manawatu Jets	4/8	50.0	1/3	33.3	0/0	0.00	9	0	2	2	1	2	1	0	0	0	0	11.5	0.00	32:39
NZCT Taranaki Mountain Airs	1/9	11.1	1/5	20.0	0/0	0.00	3	0	1	1	2	0	1	0	0	0	0	-5.00	0.00	21:05
St Laurence Wellington Saints	4/14	28.6	3/7	42.9	0/0	0.00	11	2	3	5	3	2	2	1	0	0	0	13.5	0.00	42:06
Totals	52/148	35.1	17/62	27.4	12/16	75.0	133	13	49	62	36	22	29	3	5	0	0	159		510
Game Highs	5/9	60.0	3/6	50.0	4/4	100	13	2	6	8	4	3	4	1	1	0	0	22.5	0.00	42:06
	FGM	FGA	3PM	3PA	FTM	FTA	PTS	ORB	DRB	TR	PF	AST	TO	BS	ST	DA	JW	Prod		MIN
Per Game	2.89	8.22	0.94	3.44	0.67	0.89	7.39	0.72	2.72	3.44	2.00	1.22	1.61	0.17	0.28	0.00		8.83		28:20
Per Minute	0.10	0.29	0.03	0.12	0.02	0.03	0.26	0.03	0.10	0.12	0.07	0.04	0.06	0.01	0.01	0.00		0.31		
Normalized	4.08	11.6	1.33	4.86	0.94	1.25	10.4	1.02	3.84	4.86	2.82	1.72	2.27	0.24	0.39	0.00		12.5		

Scenic Circle Canterbury Rams Basketball - Individual Season Summary

Sam Sparn

Opponent	FG	FG%	3Pt	3Pt%	FT	FT%	PTS	ORB	DRB	TR	PF	AST	TO	BS	ST	DA	JW	Prod	SR	MIN
Otago Nuggets	9/13	69.2	0/0	0.00	0/0	0.00	18	0	7	7	4	1	2	0	2	0	0	29.0	0.00	22:02
0800 Easy LPG Hawkes Bay Hawks	7/14	50.0	0/0	0.00	3/4	75.0	17	2	6	8	5	1	4	1	1	0	0	23.0	0.00	29:11
Appliance Shed Harbour Heat	1/8	12.5	0/1	0.00	3/7	42.9	5	4	9	13	3	3	1	0	1	0	0	22.0	0.00	32:16
GI Juice Auckland Stars	8/11	72.7	0/1	0.00	1/2	50.0	17	2	6	8	1	1	4	0	2	0	0	26.5	0.00	32:24
GI Juice Auckland Stars	5/9	55.6	0/1	0.00	1/1	100	11	3	5	8	4	2	2	0	0	0	0	21.0	0.00	32:05
Appliance Shed Harbour Heat	10/16	62.5	0/2	0.00	0/1	0.00	20	1	4	5	2	2	0	0	5	0	1	38.0	0.00	35:18
NBS Nelson Giants	3/13	23.1	0/1	0.00	0/1	0.00	6	3	2	5	3	1	2	0	0	0	1	2.00	0.00	33:06
NZCT Taranaki Mountain Airs	4/11	36.4	0/0	0.00	2/4	50.0	10	6	6	12	3	3	2	1	0	0	1	26.5	0.00	27:07
St Laurence Wellington Saints	8/15	53.3	1/2	50.0	0/0	0.00	17	1	3	4	4	4	2	1	1	0	0	28.5	0.00	22:47
Waikato Pistons	3/9	33.3	0/3	0.00	2/6	33.3	8	2	7	9	2	3	4	1	2	0	1	21.0	0.00	26:20
Waikato Pistons	7/15	46.7	0/1	0.00	1/2	50.0	15	4	5	9	2	1	3	1	2	0	0	25.5	0.00	37:27
Inspire Net Manawatu Jets	6/10	60.0	0/0	0.00	1/2	50.0	13	5	9	14	3	5	2	1	2	0	1	46.5	0.00	36:15
Otago Nuggets	1/4	25.0	1/2	50.0	3/4	75.0	6	1	2	3	4	1	2	0	1	0	1	8.50	0.00	13:53
NBS Nelson Giants	6/15	40.0	0/0	0.00	2/5	40.0	14	6	3	9	4	2	2	0	5	0	1	30.0	0.00	32:04
0800 Easy LPG Hawkes Bay Hawks	9/13	69.2	0/0	0.00	0/2	0.00	18	2	2	4	4	4	0	0	0	0	1	28.0	0.00	28:06
Inspire Net Manawatu Jets	11/14	78.6	1/1	100	4/5	80.0	27	4	7	11	4	3	4	0	2	0	0	46.0	0.00	31:36
NZCT Taranaki Mountain Airs	11/20	55.0	0/3	0.00	1/2	50.0	23	5	6	11	3	6	0	1	1	0	1	50.0	0.00	36:15
St Laurence Wellington Saints	4/13	30.8	0/1	0.00	5/6	83.3	13	3	11	14	5	3	4	1	4	0	0	38.5	0.00	37:48
Totals	113/223	50.7	3/19	15.8	29/54	53.7	258	54	100	154	60	46	40	8	31	0	9	511		546
Game Highs	11/14	78.6	1/2	100	5/6	100	27	6	11	14	5	6	4	1	5	0	1	50.0	0.00	37:48
	FGM	FGA	3PM	3PA	FTM	FTA	PTS	ORB	DRB	TR	PF	AST	TO	BS	ST	DA	JW	Prod		MIN
Per Game	6.28	12.4	0.17	1.06	1.61	3.00	14.3	3.00	5.56	8.56	3.33	2.56	2.22	0.44	1.72	0.00		28.4		30:20
Per Minute	0.21	0.41	0.01	0.03	0.05	0.10	0.47	0.10	0.18	0.28	0.11	0.08	0.07	0.01	0.06	0.00		0.93		
Normalized	8.28	16.3	0.22	1.39	2.12	3.96	18.9	3.96	7.33	11.3	4.40	3.37	2.93	0.59	2.27	0.00		37.4		

Scenic Circle Canterbury Rams Basketball - Individual Season Summary

Mike Townsend

Opponent	FG	FG%	3Pt	3Pt%	FT	FT%	PTS	ORB	DRB	TR	PF	AST	TO	BS	ST	DA	JW	Prod	SR	MIN
Otago Nuggets	0/1	0.00	0/0	0.00	0/0	0.00	0	0	2	2	2	0	0	0	0	0	0	2.00	0.00	10:32
0800 Easy LPG Hawkes Bay Hawks	0/3	0.00	0/0	0.00	0/0	0.00	0	0	0	0	0	0	0	0	1	0	0	-0.50	0.00	4:57
Appliance Shed Harbour Heat	3/4	75.0	0/0	0.00	0/0	0.00	6	1	2	3	4	1	1	1	0	0	0	13.5	0.00	19:49
GI Juice Auckland Stars	1/5	20.0	0/0	0.00	0/0	0.00	2	4	0	4	3	0	2	0	0	0	0	1.00	0.00	17:43
GI Juice Auckland Stars	0/1	0.00	0/0	0.00	0/0	0.00	0	1	0	1	0	0	1	0	0	0	0	-1.00	0.00	7:06
Appliance Shed Harbour Heat	2/3	66.7	0/0	0.00	0/2	0.00	4	0	0	0	1	0	1	0	3	0	0	7.00	0.00	11:43
NBS Nelson Giants	0/0	0.00	0/0	0.00	0/0	0.00	0	1	1	2	1	0	1	1	0	0	0	4.50	0.00	6:13
NZCT Taranaki Mountain Airs	1/2	50.0	0/0	0.00	1/2	50.0	3	1	3	4	2	0	1	2	0	0	0	11.5	0.00	15:16
St Laurence Wellington Saints	1/1	100	0/0	0.00	0/0	0.00	2	0	0	0	1	0	2	0	0	0	0	-1.00	0.00	8:41
Waikato Pistons	2/6	33.3	0/0	0.00	0/0	0.00	4	0	0	0	2	0	0	0	0	0	0	0.00	0.00	16:16
Waikato Pistons	0/3	0.00	0/0	0.00	0/0	0.00	0	0	0	0	0	0	0	0	0	0	0	-3.00	0.00	7:43
Inspire Net Manawatu Jets	0/0	0.00	0/0	0.00	0/0	0.00	0	0	0	0	0	0	0	0	1	0	0	2.50	0.00	2:17
Otago Nuggets	0/0	0.00	0/0	0.00	0/0	0.00	0	0	0	0	0	0	0	0	0	0	0	0.00	0.00	2:58
NBS Nelson Giants	0/0	0.00	0/0	0.00	0/0	0.00	0	0	0	0	1	0	0	0	0	0	0	0.00	0.00	1:50
0800 Easy LPG Hawkes Bay Hawks	0/1	0.00	0/0	0.00	0/0	0.00	0	0	1	1	0	0	0	0	1	0	0	3.00	0.00	2:57
Inspire Net Manawatu Jets	1/1	100	0/0	0.00	0/0	0.00	2	0	1	1	3	1	1	0	2	0	0	9.50	0.00	6:30
NZCT Taranaki Mountain Airs	2/2	100	0/0	0.00	0/0	0.00	4	1	1	2	1	0	1	0	0	0	0	5.50	0.00	4:22
St Laurence Wellington Saints	0/0	0.00	0/0	0.00	0/0	0.00	0	2	0	2	1	0	1	0	0	0	0	1.50	0.00	5:53
Totals	13/33	39.4	0/0	0.00	1/4	25.0	27	11	11	22	22	2	12	4	8	0	0	56.0		152
Game Highs	3/4	100	0/0	0.00	1/2	50.0	6	4	3	4	4	1	2	2	3	0	0	13.5	0.00	19:49
	FGM	FGA	3PM	3PA	FTM	FTA	PTS	ORB	DRB	TR	PF	AST	TO	BS	ST	DA	JW	Prod		MIN
Per Game	0.72	1.83	0.00	0.00	0.06	0.22	1.50	0.61	0.61	1.22	1.22	0.11	0.67	0.22	0.44	0.00		3.11		8:29
Per Minute	0.09	0.22	0.00	0.00	0.01	0.03	0.18	0.07	0.07	0.14	0.14	0.01	0.08	0.03	0.05	0.00		0.37		
Normalized	3.40	8.64	0.00	0.00	0.26	1.05	7.07	2.88	2.88	5.76	5.76	0.52	3.14	1.05	2.09	0.00		14.7		

Scenic Circle Canterbury Rams Basketball - Individual Season Summary

Tony Hawke

Opponent	FG	FG%	3Pt	3Pt%	FT	FT%	PTS	ORB	DRB	TR	PF	AST	TO	BS	ST	DA	JW	Prod	SR	MIN
Appliance Shed Harbour Heat	1/1	100	0/0	0.00	0/0	0.00	2	0	0	0	0	0	0	0	0	0	0	2.00	0.00	2:04
NZCT Taranaki Mountain Airs	0/0	0.00	0/0	0.00	0/0	0.00	0	0	0	0	0	0	0	0	0	0	0	0.00	0.00	1:38
St Laurence Wellington Saints	0/0	0.00	0/0	0.00	0/0	0.00	0	0	0	0	0	0	0	0	0	0	0	0.00	0.00	0:13
Totals	1/1	100	0/0	0.00	0/0	0.00	2	0	0	0	0	0	0	0	0	0	0	2.00	0.00	3:55
Game Highs	1/1	100	0/0	0.00	0/0	0.00	2	0	0	0	0	0	0	0	0	0	0	2.00	0.00	2:04
	FGM	FGA	3PM	3PA	FTM	FTA	PTS	ORB	DRB	TR	PF	AST	TO	BS	ST	DA	JW	Prod		MIN
Per Game	0.33	0.33	0.00	0.00	0.00	0.00	0.67	0.00	0.00	0.00	0.00	0.00	0.00	0.00	0.00	0.00		0.67		1:18
Per Minute	0.26	0.26	0.00	0.00	0.00	0.00	0.51	0.00	0.00	0.00	0.00	0.00	0.00	0.00	0.00	0.00		0.51		
Normalized	10.2	10.2	0.00	0.00	0.00	0.00	20.4	0.00	0.00	0.00	0.00	0.00	0.00	0.00	0.00	0.00		20.4		

Scenic Circle Canterbury Rams Basketball - Individual Season Summary

Nathan Hyde

Opponent	FG	FG%	3Pt	3Pt%	FT	FT%	PTS	ORB	DRB	TR	PF	AST	TO	BS	ST	DA	JW	Prod	SR	MIN
Otago Nuggets	0/0	0.00	0/0	0.00	0/0	0.00	0	0	0	0	1	0	0	0	0	0	0	0.00	0.00	6:14
0800 Easy LPG Hawkes Bay Hawks	1/1	100	0/0	0.00	0/0	0.00	2	1	0	1	1	0	1	0	1	0	0	4.50	0.00	7:25
Appliance Shed Harbour Heat	0/2	0.00	0/0	0.00	0/0	0.00	0	2	0	2	0	0	0	0	0	0	0	1.00	0.00	10:25
GI Juice Auckland Stars	1/3	33.3	0/1	0.00	0/0	0.00	2	1	2	3	1	0	0	0	0	0	0	4.50	0.00	14:11
GI Juice Auckland Stars	0/2	0.00	0/0	0.00	0/0	0.00	0	0	1	1	1	0	0	0	0	0	0	-0.50	0.00	8:19
Appliance Shed Harbour Heat	0/0	0.00	0/0	0.00	0/0	0.00	0	0	0	0	0	0	0	0	0	0	0	0.00	0.00	1:26
NBS Nelson Giants	0/2	0.00	0/0	0.00	0/0	0.00	0	0	0	0	2	0	1	0	0	0	0	-3.50	0.00	7:31
NZCT Taranaki Mountain Airs	0/0	0.00	0/0	0.00	2/2	100	2	0	0	0	1	0	0	0	0	0	0	2.00	0.00	4:37
St Laurence Wellington Saints	0/0	0.00	0/0	0.00	0/0	0.00	0	0	1	1	0	0	0	1	0	0	0	4.50	0.00	3:11
Waikato Pistons	1/1	100	0/0	0.00	0/0	0.00	2	2	3	5	2	0	0	0	0	0	0	9.50	0.00	9:52
Waikato Pistons	0/1	0.00	0/0	0.00	0/0	0.00	0	2	1	3	3	0	3	0	4	0	0	9.00	0.00	18:41
Inspire Net Manawatu Jets	0/4	0.00	0/1	0.00	0/0	0.00	0	0	0	0	1	2	1	0	0	0	0	-0.50	0.00	13:30
Otago Nuggets	2/6	33.3	0/0	0.00	0/0	0.00	4	0	4	4	4	0	0	1	0	0	0	9.00	0.00	26:51
NBS Nelson Giants	1/3	33.3	0/0	0.00	4/4	100	6	0	1	1	5	0	0	0	0	0	0	5.50	0.00	18:17
0800 Easy LPG Hawkes Bay Hawks	0/1	0.00	0/0	0.00	2/2	100	2	0	4	4	4	3	3	1	2	0	0	18.0	0.00	23:11
Inspire Net Manawatu Jets	2/2	100	0/0	0.00	0/0	0.00	4	0	0	0	3	0	1	0	0	0	0	2.50	0.00	7:50
NZCT Taranaki Mountain Airs	1/6	16.7	0/0	0.00	0/0	0.00	2	0	1	1	3	0	2	0	0	0	0	-4.50	0.00	20:16
St Laurence Wellington Saints	2/2	100	0/0	0.00	3/4	75.0	7	0	1	1	3	1	0	0	0	0	0	10.0	0.00	21:56
Totals	11/36	30.6	0/2	0.00	11/12	91.7	33	8	19	27	35	6	12	3	7	0	0	71.0		223
Game Highs	2/6	100	0/0	0.00	4/4	100	7	2	4	5	5	3	3	1	4	0	0	18.0	0.00	26:51
	FGM	FGA	3PM	3PA	FTM	FTA	PTS	ORB	DRB	TR	PF	AST	TO	BS	ST	DA	JW	Prod		MIN
Per Game	0.61	2.00	0.00	0.11	0.61	0.67	1.83	0.44	1.06	1.50	1.94	0.33	0.67	0.17	0.39	0.00		3.94		12:25
Per Minute	0.05	0.16	0.00	0.01	0.05	0.05	0.15	0.04	0.08	0.12	0.16	0.03	0.05	0.01	0.03	0.00		0.32		
Normalized	1.97	6.44	0.00	0.36	1.97	2.15	5.90	1.43	3.40	4.83	6.26	1.07	2.15	0.54	1.25	0.00		12.7		

Scenic Circle Canterbury Rams Basketball - Individual Season Summary

Paul McFarlin

Opponent	FG	FG%	3Pt	3Pt%	FT	FT%	PTS	ORB	DRB	TR	PF	AST	TO	BS	ST	DA	JW	Prod	SR	MIN
Otago Nuggets	0/0	0.00	0/0	0.00	1/2	50.0	1	0	2	2	0	0	0	0	0	0	0	3.00	0.00	4:50
0800 Easy LPG Hawkes Bay Hawks	0/2	0.00	0/0	0.00	0/0	0.00	0	0	0	0	0	0	0	0	0	0	0	-2.00	0.00	1:29
Appliance Shed Harbour Heat	0/0	0.00	0/0	0.00	0/0	0.00	0	0	0	0	0	0	0	0	0	0	0	0.00	0.00	1:26
NZCT Taranaki Mountain Airs	0/1	0.00	0/0	0.00	0/0	0.00	0	0	0	0	0	0	0	0	0	0	0	-1.00	0.00	1:52
Waikato Pistons	0/0	0.00	0/0	0.00	0/0	0.00	0	0	0	0	0	0	0	0	0	0	0	0.00	0.00	1:03
Otago Nuggets	0/0	0.00	0/0	0.00	0/0	0.00	0	0	0	0	0	0	1	0	1	0	0	1.00	0.00	1:21
NZCT Taranaki Mountain Airs	0/0	0.00	0/0	0.00	0/0	0.00	0	0	0	0	0	0	0	0	0	0	0	0.00	0.00	0:33
St Laurence Wellington Saints	0/0	0.00	0/0	0.00	0/0	0.00	0	0	0	0	0	0	0	0	1	0	0	2.50	0.00	0:23
Totals	0/3	0.00	0/0	0.00	1/2	50.0	1	0	2	2	0	0	1	0	2	0	0	3.50		12:57
Game Highs	0/0	0.00	0/0	0.00	1/2	50.0	1	0	2	2	0	0	1	0	1	0	0	3.00	0.00	4:50
	FGM	FGA	3PM	3PA	FTM	FTA	PTS	ORB	DRB	TR	PF	AST	TO	BS	ST	DA	JW	Prod		MIN
Per Game	0.00	0.38	0.00	0.00	0.13	0.25	0.13	0.00	0.25	0.25	0.00	0.00	0.13	0.00	0.25	0.00		0.44		1:37
Per Minute	0.00	0.23	0.00	0.00	0.08	0.15	0.08	0.00	0.15	0.15	0.00	0.00	0.08	0.00	0.15	0.00		0.27		
Normalized	0.00	9.27	0.00	0.00	3.09	6.18	3.09	0.00	6.18	6.18	0.00	0.00	3.09	0.00	6.18	0.00		10.8		

Scenic Circle Canterbury Rams Basketball - Individual Season Summary

Dennis Trammell

Opponent	FG	FG%	3Pt	3Pt%	FT	FT%	PTS	ORB	DRB	TR	PF	AST	TO	BS	ST	DA	JW	Prod	SR	MIN	
Otago Nuggets	10/22	45.5	3/7	42.9	6/6	100	29	3	3	6	1	2	2	0	1	0	0	0	30.5	0.00	34:00
0800 Easy LPG Hawkes Bay Hawks	7/20	35.0	4/9	44.4	1/2	50.0	19	2	2	4	1	3	2	0	4	0	0	0	25.5	0.00	33:20
Appliance Shed Harbour Heat	6/16	37.5	0/2	0.00	3/4	75.0	15	0	5	5	1	2	2	0	3	0	0	0	21.0	0.00	34:10
GI Juice Auckland Stars	12/20	60.0	3/9	33.3	10/12	83.3	37	2	3	5	2	1	1	0	0	0	0	0	35.5	0.00	37:20
GI Juice Auckland Stars	11/22	50.0	5/11	45.5	4/5	80.0	31	1	3	4	3	0	1	0	0	0	0	0	23.5	0.00	37:50
Appliance Shed Harbour Heat	4/16	25.0	1/4	25.0	6/7	85.7	15	3	2	5	2	0	1	0	3	0	0	0	15.5	0.00	35:40
NBS Nelson Giants	13/21	61.9	9/13	69.2	6/6	100	41	0	3	3	2	0	2	0	1	0	0	0	37.0	0.00	38:30
NZCT Taranaki Mountain Airs	6/14	42.9	1/4	25.0	6/6	100	19	1	6	7	3	3	1	0	2	0	0	0	32.5	0.00	36:30
St Laurence Wellington Saints	12/21	57.1	2/3	66.7	0/0	0.00	26	5	3	8	1	2	2	0	3	0	0	0	38.5	0.00	40:00
Waikato Pistons	10/20	50.0	3/6	50.0	6/7	85.7	29	4	4	8	4	4	2	0	1	0	0	0	39.5	0.00	38:20
Waikato Pistons	9/16	56.3	0/2	0.00	3/3	100	21	4	5	9	1	0	3	0	2	0	0	0	28.0	0.00	30:40
Inspire Net Manawatu Jets	9/19	47.4	4/8	50.0	5/5	100	27	4	2	6	3	0	7	0	2	0	0	0	20.5	0.00	35:50
Otago Nuggets	14/19	73.7	9/11	81.8	0/0	0.00	37	3	8	11	2	0	1	0	1	0	0	0	49.5	0.00	36:40
NBS Nelson Giants	7/17	41.2	1/5	20.0	3/5	60.0	18	2	2	4	1	1	2	0	2	0	0	0	16.5	0.00	40:00
0800 Easy LPG Hawkes Bay Hawks	8/16	50.0	1/2	50.0	1/2	50.0	18	6	2	8	4	3	1	0	2	0	0	0	32.0	0.00	35:50
Inspire Net Manawatu Jets	7/11	63.6	0/1	0.00	6/8	75.0	20	3	6	9	3	7	3	0	0	0	0	0	40.5	0.00	40:00
NZCT Taranaki Mountain Airs	12/18	66.7	2/3	66.7	4/4	100	30	4	2	6	1	2	3	0	2	0	0	0	38.5	0.00	40:00
St Laurence Wellington Saints	12/25	48.0	0/2	0.00	4/5	80.0	28	3	2	5	4	2	2	0	2	0	0	0	28.5	0.00	53:00
Totals	169/333	50.8	48/102	47.1	74/87	85.1	460	50	63	113	39	32	38	0	31	0	0	553	678		
Game Highs	14/19	73.7	9/13	81.8	10/12	100	41	6	8	11	4	7	7	0	4	0	0	49.5	0.00	53:00	
	FGM	FGA	3PM	3PA	FTM	FTA	PTS	ORB	DRB	TR	PF	AST	TO	BS	ST	DA	JW	Prod		MIN	
Per Game	9.39	18.5	2.67	5.67	4.11	4.83	25.6	2.78	3.50	6.28	2.17	1.78	2.11	0.00	1.72	0.00		30.7		37:40	
Per Minute	0.25	0.49	0.07	0.15	0.11	0.13	0.68	0.07	0.09	0.17	0.06	0.05	0.06	0.00	0.05	0.00		0.81			
Normalized	9.96	19.6	2.83	6.01	4.36	5.13	27.1	2.95	3.71	6.66	2.30	1.89	2.24	0.00	1.83	0.00		32.6			

Scenic Circle Canterbury Rams Basketball - Individual Season Summary

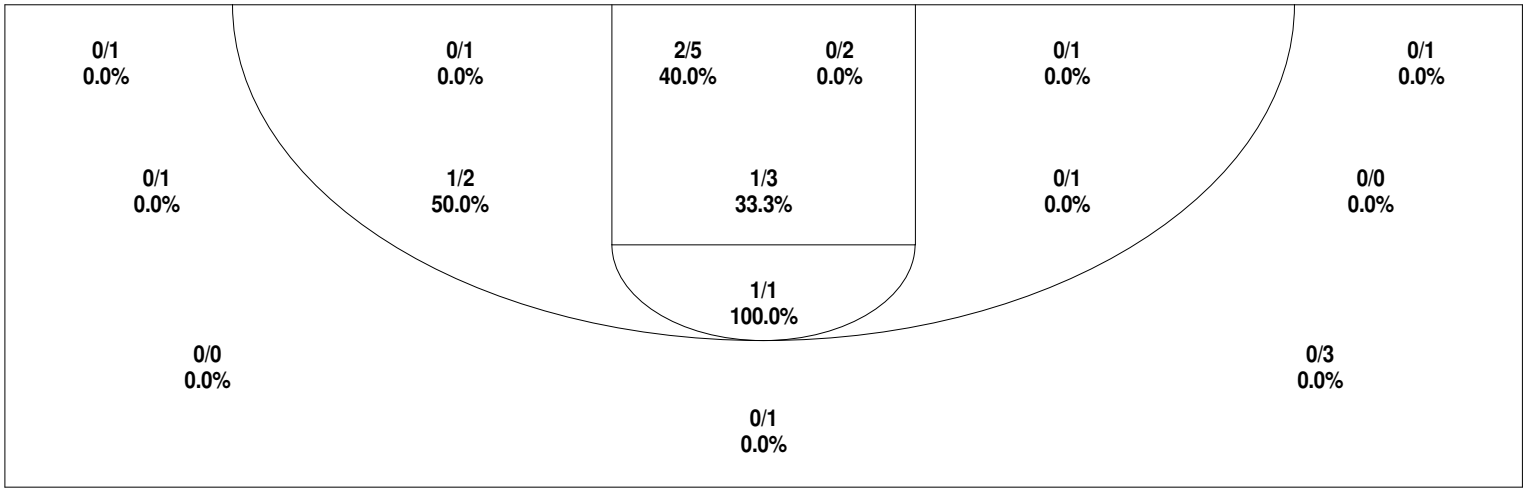
Rewi Manahi

Opponent	FG	FG%	3Pt	3Pt%	FT	FT%	PTS	ORB	DRB	TR	PF	AST	TO	BS	ST	DA	JW	Prod	SR	MIN
Otago Nuggets	8/12	66.7	0/0	0.00	0/1	0.00	16	2	3	5	2	0	2	0	0	0	0	15.5	0.00	27:18
0800 Easy LPG Hawkes Bay Hawks	3/6	50.0	0/0	0.00	3/4	75.0	9	2	5	7	4	0	1	0	0	0	0	14.0	0.00	27:53
Appliance Shed Harbour Heat	1/3	33.3	0/0	0.00	3/4	75.0	5	1	2	3	1	1	3	0	0	0	0	4.50	0.00	15:02
GI Juice Auckland Stars	3/7	42.9	0/0	0.00	4/4	100	10	2	2	4	2	0	0	0	2	0	0	17.0	0.00	15:42
GI Juice Auckland Stars	3/6	50.0	0/0	0.00	1/2	50.0	7	0	4	4	3	2	0	0	0	0	0	14.0	0.00	32:30
Appliance Shed Harbour Heat	0/4	0.00	0/0	0.00	1/2	50.0	1	1	2	3	4	0	1	0	0	0	0	-1.00	0.00	17:42
NBS Nelson Giants	1/4	25.0	0/0	0.00	3/6	50.0	5	4	2	6	3	1	1	0	0	0	0	9.00	0.00	33:10
NZCT Taranaki Mountain Airs	5/10	50.0	0/0	0.00	7/9	77.8	17	5	6	11	2	1	0	0	1	0	0	31.5	0.00	22:31
St Laurence Wellington Saints	2/3	66.7	0/0	0.00	2/2	100	6	2	4	6	4	0	0	0	0	0	0	14.0	0.00	18:22
Waikato Pistons	1/3	33.3	0/0	0.00	4/6	66.7	6	1	3	4	4	0	0	0	0	0	0	8.00	0.00	17:50
Waikato Pistons	2/3	66.7	0/0	0.00	2/4	50.0	6	1	0	1	0	1	1	0	1	0	0	8.00	0.00	17:32
Inspire Net Manawatu Jets	1/2	50.0	0/0	0.00	0/0	0.00	2	3	5	8	1	1	3	0	0	0	0	11.0	0.00	18:10
Otago Nuggets	1/6	16.7	0/0	0.00	1/2	50.0	3	3	4	7	5	0	2	0	1	0	0	7.00	0.00	17:54
NBS Nelson Giants	3/5	60.0	0/0	0.00	0/0	0.00	6	3	5	8	1	0	0	0	0	0	0	16.0	0.00	19:02
0800 Easy LPG Hawkes Bay Hawks	3/3	100	0/0	0.00	2/2	100	8	0	0	0	2	0	1	0	0	0	0	6.50	0.00	14:00
Inspire Net Manawatu Jets	3/3	100	0/0	0.00	1/1	100	7	0	3	3	1	3	0	0	1	0	0	21.5	0.00	14:31
NZCT Taranaki Mountain Airs	2/6	33.3	0/0	0.00	5/6	83.3	9	2	4	6	3	1	1	0	0	0	0	14.0	0.00	16:57
St Laurence Wellington Saints	1/4	25.0	0/0	0.00	1/2	50.0	3	0	0	0	1	0	1	0	0	0	0	-2.50	0.00	18:47
Totals	43/90	47.8	0/0	0.00	40/57	70.2	126	32	54	86	43	11	17	0	6	0	0	208		364
Game Highs	8/12	100	0/0	0.00	7/9	100	17	5	6	11	5	3	3	0	2	0	0	31.5	0.00	33:10
	FGM	FGA	3PM	3PA	FTM	FTA	PTS	ORB	DRB	TR	PF	AST	TO	BS	ST	DA	JW	Prod		MIN
Per Game	2.39	5.00	0.00	0.00	2.22	3.17	7.00	1.78	3.00	4.78	2.39	0.61	0.94	0.00	0.33	0.00		11.6		20:16
Per Minute	0.12	0.25	0.00	0.00	0.11	0.16	0.35	0.09	0.15	0.24	0.12	0.03	0.05	0.00	0.02	0.00		0.57		
Normalized	4.71	9.87	0.00	0.00	4.38	6.25	13.8	3.51	5.92	9.43	4.71	1.21	1.86	0.00	0.66	0.00		22.8		

Scenic Circle Canterbury Rams Basketball - Individual Season Summary

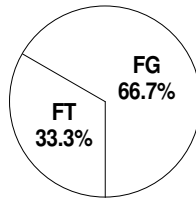
Joel Hart

Opponent	FG	FG%	3Pt	3Pt%	FT	FT%	PTS	ORB	DRB	TR	PF	AST	TO	BS	ST	DA	JW	Prod	SR	MIN
0800 Easy LPG Hawkes Bay Hawks	2/9	22.2	0/5	0.00	0/1	0.00	4	1	1	2	3	0	1	0	0	0	0	-2.50	0.00	14:36
Appliance Shed Harbour Heat	1/2	50.0	0/1	0.00	0/0	0.00	2	0	0	0	0	0	0	0	0	0	0	1.00	0.00	6:27
GI Juice Auckland Stars	0/1	0.00	0/1	0.00	0/2	0.00	0	0	0	0	0	0	0	0	0	0	0	-3.00	0.00	4:01
Appliance Shed Harbour Heat	1/8	12.5	1/5	20.0	3/4	75.0	6	1	1	2	2	0	2	0	2	0	0	3.00	0.00	16:25
NBS Nelson Giants	0/1	0.00	0/1	0.00	0/0	0.00	0	0	1	1	1	0	0	0	0	0	0	0.50	0.00	1:24
NZCT Taranaki Mountain Airs	4/5	80.0	2/3	66.7	0/0	0.00	10	0	1	1	1	0	3	0	0	0	0	6.00	0.00	17:22
St Laurence Wellington Saints	3/7	42.9	1/5	20.0	2/2	100	9	0	1	1	1	3	1	0	1	0	0	15.0	0.00	20:27
Waikato Pistons	9/18	50.0	4/8	50.0	1/1	100	23	1	1	2	5	1	2	0	2	0	0	21.5	0.00	19:52
Inspire Net Manawatu Jets	2/3	66.7	1/2	50.0	0/0	0.00	5	0	0	0	2	0	1	0	0	0	0	2.50	0.00	7:39
Otago Nuggets	0/3	0.00	0/2	0.00	0/0	0.00	0	0	0	0	0	0	0	0	0	0	0	-3.00	0.00	8:31
NBS Nelson Giants	0/1	0.00	0/0	0.00	0/0	0.00	0	0	0	0	0	0	0	0	0	0	0	-1.00	0.00	1:49
0800 Easy LPG Hawkes Bay Hawks	0/1	0.00	0/1	0.00	0/0	0.00	0	0	0	0	0	0	1	0	0	0	0	-2.50	0.00	5:12
Inspire Net Manawatu Jets	1/4	25.0	1/2	50.0	1/2	50.0	4	1	1	2	0	0	1	0	0	0	0	1.50	0.00	12:00
Totals	23/63	36.5	10/36	27.8	7/12	58.3	63	4	7	11	15	4	12	0	5	0	0	39.0		135
Game Highs	9/18	80.0	4/8	66.7	3/4	100	23	1	1	2	5	3	3	0	2	0	0	21.5	0.00	20:27
	FGM	FGA	3PM	3PA	FTM	FTA	PTS	ORB	DRB	TR	PF	AST	TO	BS	ST	DA	JW	Prod		MIN
Per Game	1.77	4.85	0.77	2.77	0.54	0.92	4.85	0.31	0.54	0.85	1.15	0.31	0.92	0.00	0.38	0.00		3.00		10:26
Per Minute	0.17	0.46	0.07	0.27	0.05	0.09	0.46	0.03	0.05	0.08	0.11	0.03	0.09	0.00	0.04	0.00		0.29		
Normalized	6.78	18.6	2.95	10.6	2.06	3.54	18.6	1.18	2.06	3.24	4.42	1.18	3.54	0.00	1.47	0.00		11.5		

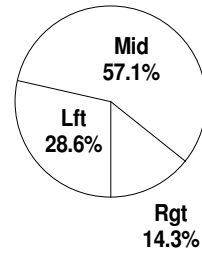


Shot Summary	M/A	%	PTS
3Pt FG	0/7	0.0%	0
2Pt FG	7/20	35.0%	14
Layups - L	1/1	100.0%	2
Layups - R	1/3	33.3%	2
Dunks	0/0	0.0%	0
Putbacks	0/0	0.0%	0
Overall Shooting	7/27	25.9%	14
Free Throws	7/14	50.0%	7
Total Points			21

Scoring Distribution

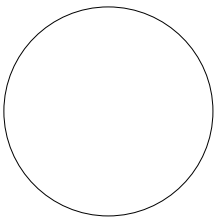


Scoring Locations

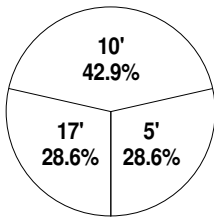


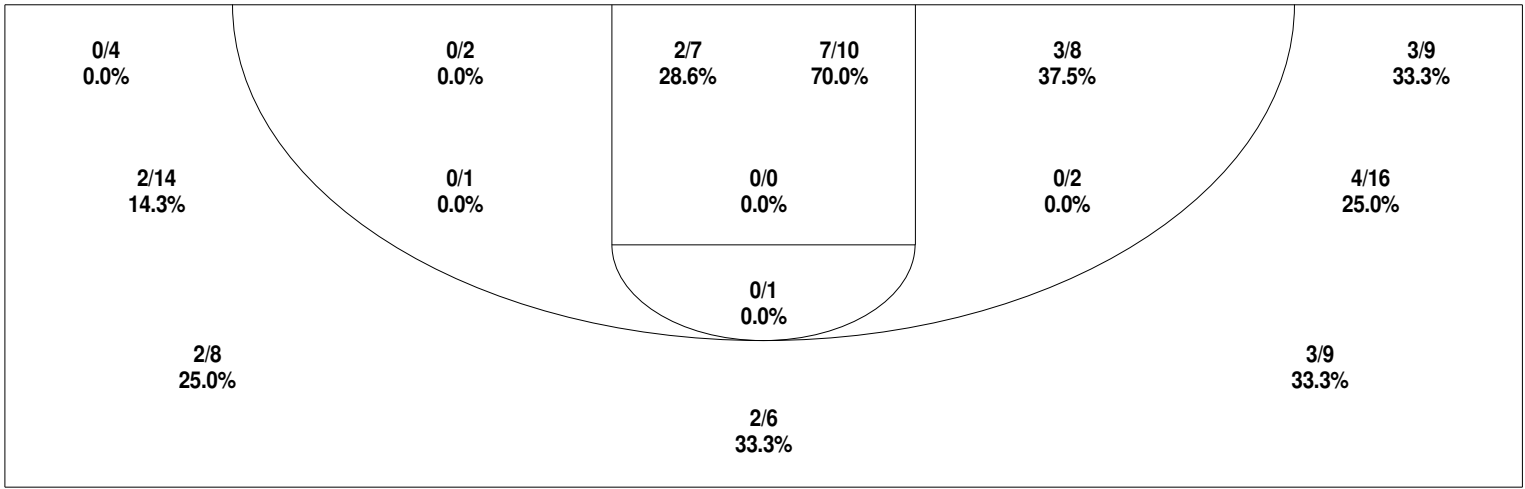
	G	FG	FGA	3Pt	3PA	FT	FTA	PTS	ORB	DRB	TR	PF	AST	TO	BS	ST	DA	P/S	MIN
Season	18	7	27	0	7	7	14	21	9	13	22	22	16	20	1	2	0	0.62	173
Per Game	18	0.39	1.11	0.00	0.39	0.39	0.78	1.17	0.50	0.72	1.22	1.22	0.89	1.11	0.06	0.11	0.00	0.62	
Per Minute	18	0.73	2.81	0	0.73	0.73	1.46	2.18	0.94	1.35	2.29	2.29	1.66	2.08	0.10	0.21	0		
Normalized	18	29.1	112	0	29.1	29.1	58.3	87.4	37.5	54.1	91.6	91.6	66.6	83.2	4.16	8.32	0		

Scoring Breakdown



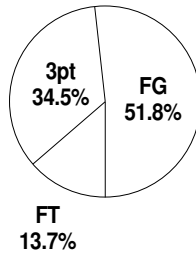
Scoring Range



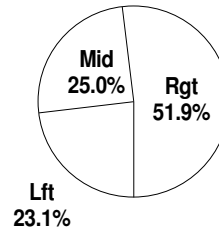


Shot Summary	M/A	%	PTS
3Pt FG	16/66	24.2%	48
2Pt FG	36/64	56.3%	72
Layups - L	8/10	80.0%	16
Layups - R	14/21	66.7%	28
Dunks	1/1	100.0%	2
Putbacks	1/1	100.0%	2
Overall Shooting	52/130	40.0%	120
Free Throws	19/34	55.9%	19
Total Points			139

Scoring Distribution

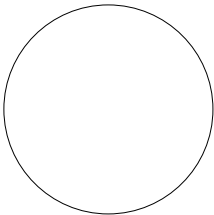


Scoring Locations

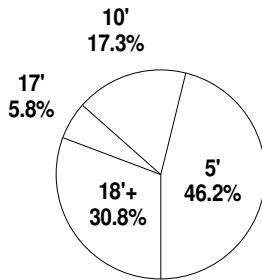


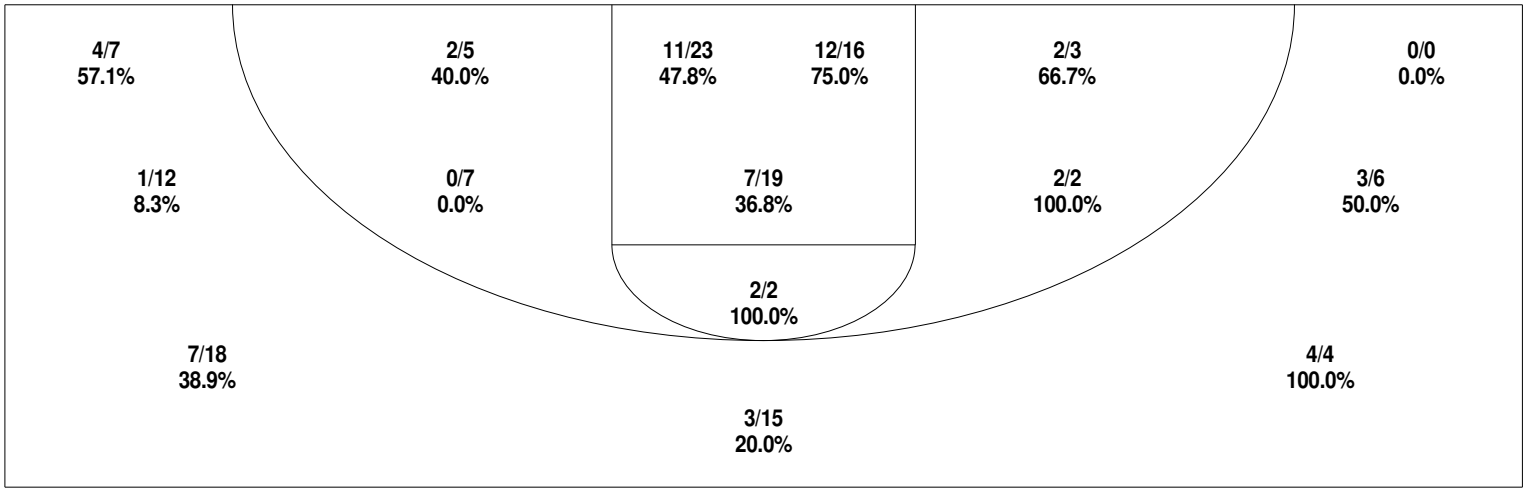
	G	FG	FGA	3Pt	3PA	FT	FTA	PTS	ORB	DRB	TR	PF	AST	TO	BS	ST	DA	P/S	MIN
Season	18	52	130	16	66	19	34	139	15	23	38	34	14	17	2	27	0	0.95	337
Per Game	18	2.00	3.56	0.89	3.67	1.06	1.89	7.72	0.83	1.28	2.11	1.89	0.78	0.94	0.11	1.50	0.00	0.95	
Per Minute	18	2.78	6.94	0.85	3.52	1.01	1.82	7.42	0.80	1.23	2.03	1.82	0.75	0.91	0.11	1.44	0		
Normalized	18	111	278	34.2	141	40.6	72.6	297	32.0	49.1	81.2	72.6	29.9	36.3	4.27	57.7	0		

Scoring Breakdown



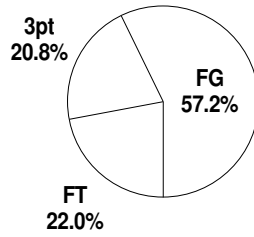
Scoring Range



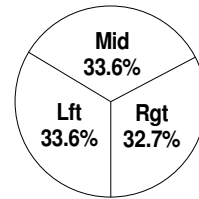


Shot Summary	M/A	%	PTS
3Pt FG	22/62	35.5%	66
2Pt FG	91/152	59.9%	182
Layups - L	24/38	63.2%	48
Layups - R	26/33	78.8%	52
Dunks	2/3	66.7%	4
Putbacks	1/1	100.0%	2
Overall Shooting	113/214	52.8%	248
Free Throws	70/97	72.2%	70
Total Points			318

Scoring Distribution

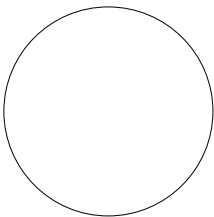


Scoring Locations

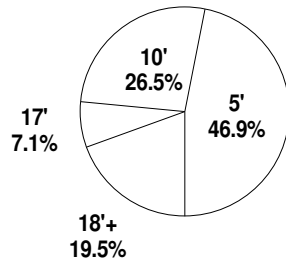


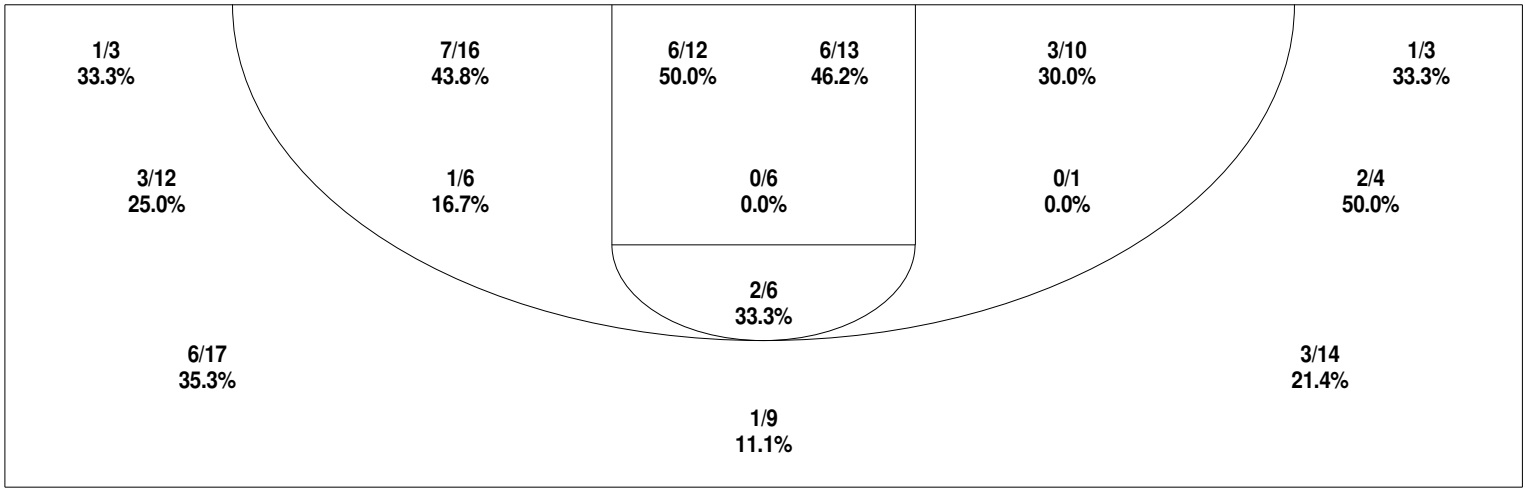
	G	FG	FGA	3Pt	3PA	FT	FTA	PTS	ORB	DRB	TR	PF	AST	TO	BS	ST	DA	P/S	MIN
Season	17	113	214	22	62	70	97	318	11	57	68	60	58	57	1	49	0	1.21	535
Per Game	17	5.35	8.94	1.29	3.65	4.12	5.71	18.7	0.65	3.35	4.00	3.53	3.41	3.35	0.06	2.88	0.00	1.21	
Per Minute	17	3.58	6.79	0.70	1.97	2.22	3.08	10.1	0.35	1.81	2.16	1.90	1.84	1.81	0.03	1.55	0		
Normalized	17	143	272	27.9	78.7	88.8	123	404	14.0	72.3	86.3	76.1	73.6	72.3	1.27	62.2	0		

Scoring Breakdown



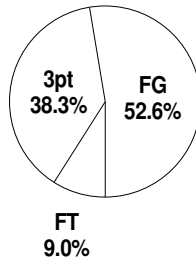
Scoring Range



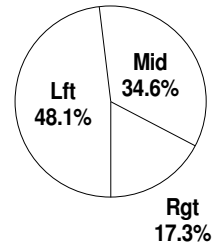


Shot Summary	M/A	%	PTS
3Pt FG	17/62	27.4%	51
2Pt FG	35/86	40.7%	70
Layups - L	7/9	77.8%	14
Layups - R	0/2	0.0%	0
Dunks	2/2	100.0%	4
Putbacks	1/3	33.3%	2
Overall Shooting	52/148	35.1%	121
Free Throws	12/16	75.0%	12
Total Points			133

Scoring Distribution

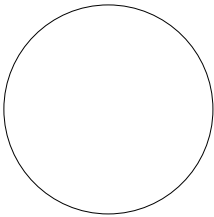


Scoring Locations

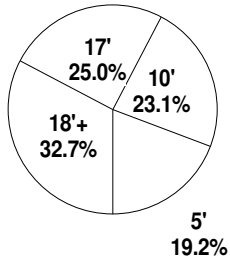


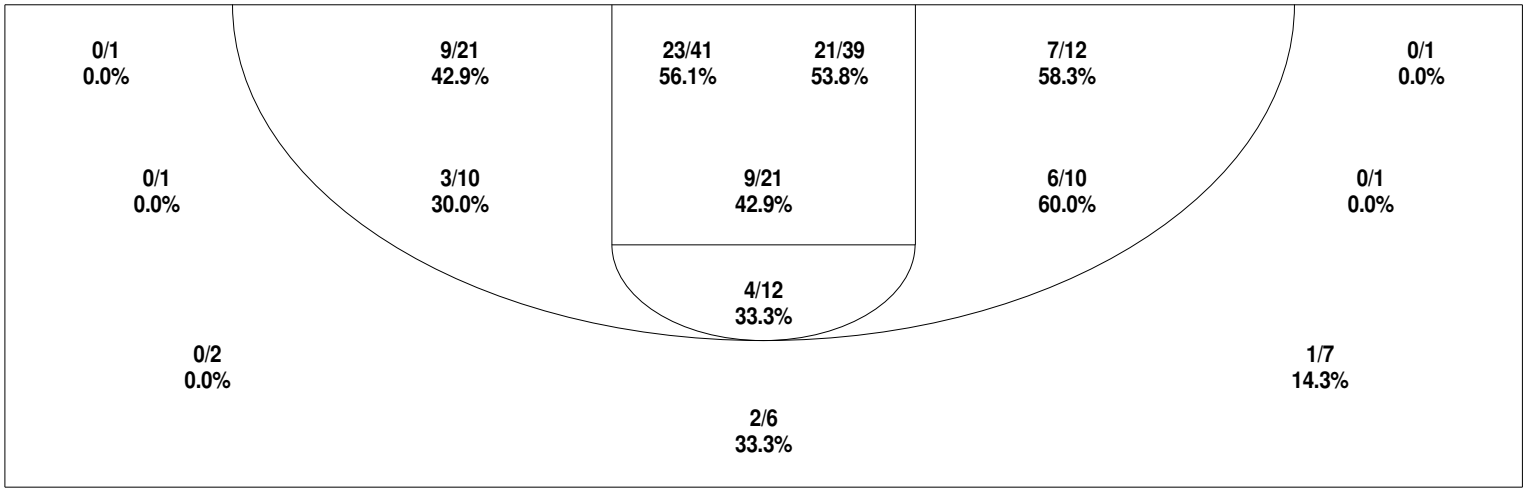
	G	FG	FGA	3Pt	3PA	FT	FTA	PTS	ORB	DRB	TR	PF	AST	TO	BS	ST	DA	P/S	MIN
Season	18	52	148	17	62	12	16	133	13	49	62	36	22	29	3	5	0	0.85	510
Per Game	18	1.94	4.78	0.94	3.44	0.67	0.89	7.39	0.72	2.72	3.44	2.00	1.22	1.61	0.17	0.28	0.00	0.85	
Per Minute	18	1.83	5.22	0.60	2.19	0.42	0.56	4.69	0.46	1.73	2.19	1.27	0.78	1.02	0.11	0.18	0		
Normalized	18	73.4	209	24.0	87.5	16.9	22.6	188	18.3	69.1	87.5	50.8	31.0	40.9	4.23	7.06	0		

Scoring Breakdown



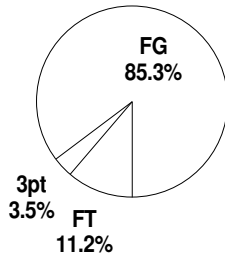
Scoring Range



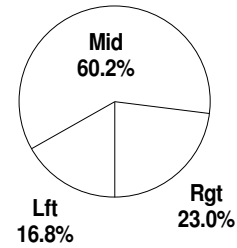


Shot Summary	M/A	%	PTS
3Pt FG	3/19	15.8%	9
2Pt FG	110/204	53.9%	220
Layups - L	7/10	70.0%	14
Layups - R	12/16	75.0%	24
Dunks	3/3	100.0%	6
Putbacks	6/9	66.7%	12
Overall Shooting	113/223	50.7%	229
Free Throws	29/54	53.7%	29
Total Points			258

Scoring Distribution

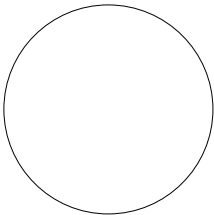


Scoring Locations

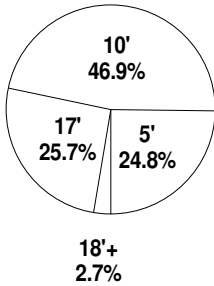


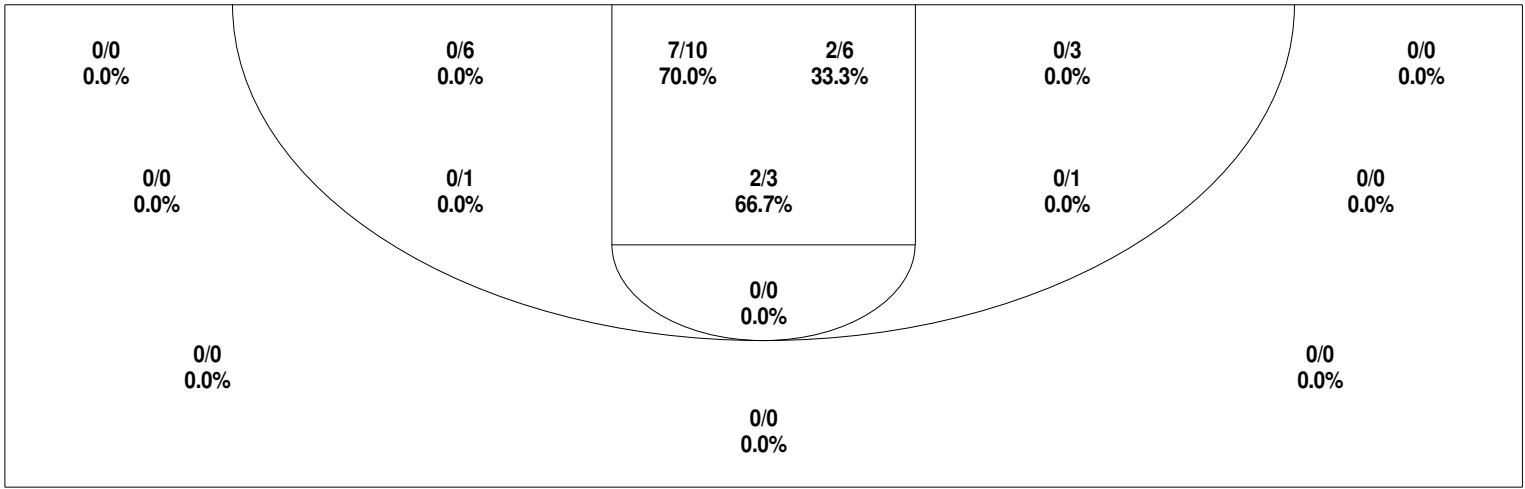
	G	FG	FGA	3Pt	3PA	FT	FTA	PTS	ORB	DRB	TR	PF	AST	TO	BS	ST	DA	P/S	MIN
Season	18	113	223	3	19	29	54	258	54	100	154	60	46	40	8	31	0	1.03	546
Per Game	18	6.11	11.3	0.17	1.06	1.61	3.00	14.3	3.00	5.56	8.56	3.33	2.56	2.22	0.44	1.72	0.00	1.03	
Per Minute	18	3.73	7.35	0.10	0.63	0.96	1.78	8.51	1.78	3.30	5.08	1.98	1.52	1.32	0.26	1.02	0		
Normalized	18	149	294	3.96	25.1	38.2	71.2	340	71.2	132	203	79.1	60.7	52.7	10.5	40.9	0		

Scoring Breakdown



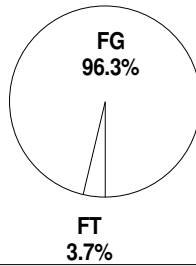
Scoring Range



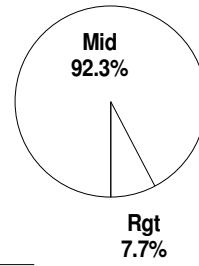


Shot Summary	M/A	%	PTS
3Pt FG	0/0	0.0%	0
2Pt FG	13/33	39.4%	26
Layups - L	0/1	0.0%	0
Layups - R	1/1	100.0%	2
Dunks	0/0	0.0%	0
Putbacks	1/1	100.0%	2
Overall Shooting	13/33	39.4%	26
Free Throws	1/4	25.0%	1
Total Points			27

Scoring Distribution

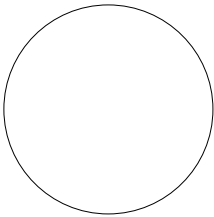


Scoring Locations

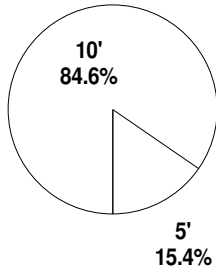


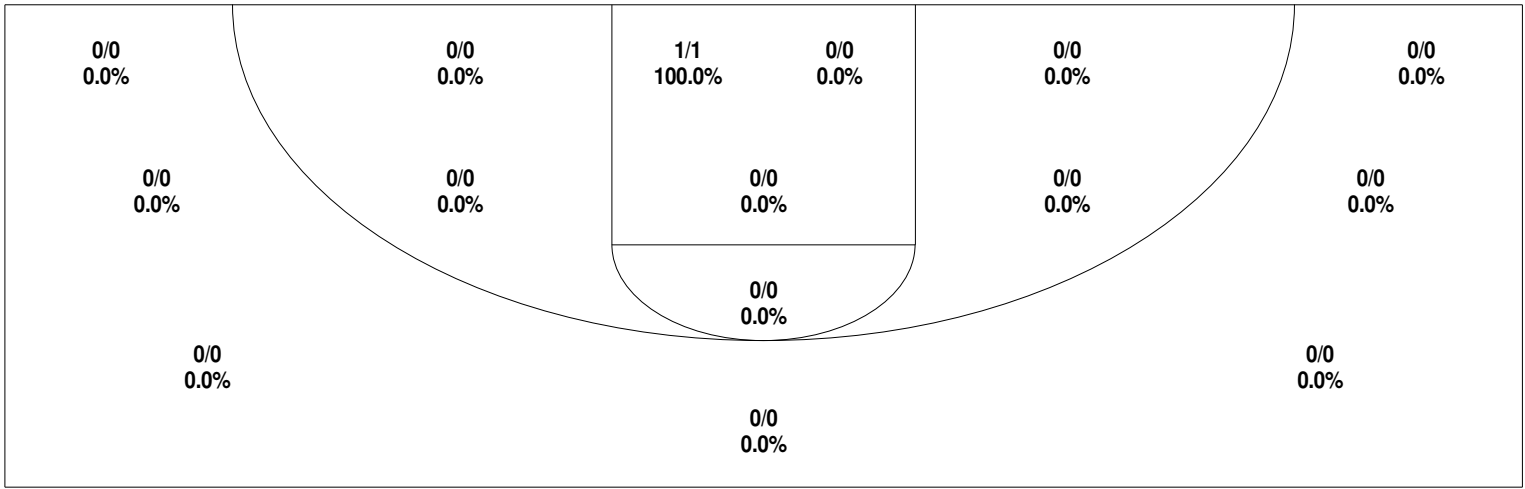
	G	FG	FGA	3Pt	3PA	FT	FTA	PTS	ORB	DRB	TR	PF	AST	TO	BS	ST	DA	P/S	MIN
Season	18	13	33	0	0	1	4	27	11	11	22	22	2	12	4	8	0	0.77	152
Per Game	18	0.72	1.83	0.00	0.00	0.06	0.22	1.50	0.61	0.61	1.22	1.22	0.11	0.67	0.22	0.44	0.00	0.77	
Per Minute	18	1.53	3.89	0	0	0.12	0.47	3.18	1.30	1.30	2.59	2.59	0.24	1.41	0.47	0.94	0		
Normalized	18	61.3	156	0	0	4.71	18.9	127	51.8	51.8	104	104	9.43	56.6	18.9	37.7	0		

Scoring Breakdown



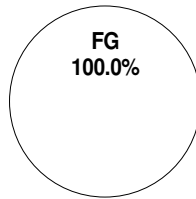
Scoring Range



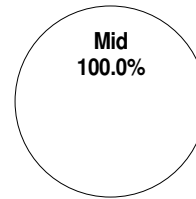


Shot Summary	M/A	%	PTS
3Pt FG	0/0	0.0%	0
2Pt FG	1/1	100.0%	2
Layups - L	0/0	0.0%	0
Layups - R	0/0	0.0%	0
Dunks	0/0	0.0%	0
Putbacks	0/0	0.0%	0
Overall Shooting	1/1	100.0%	2
Free Throws	0/0	0.0%	0
Total Points			2

Scoring Distribution

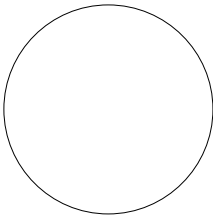


Scoring Locations

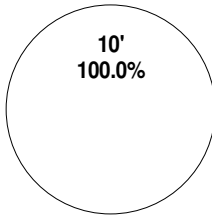


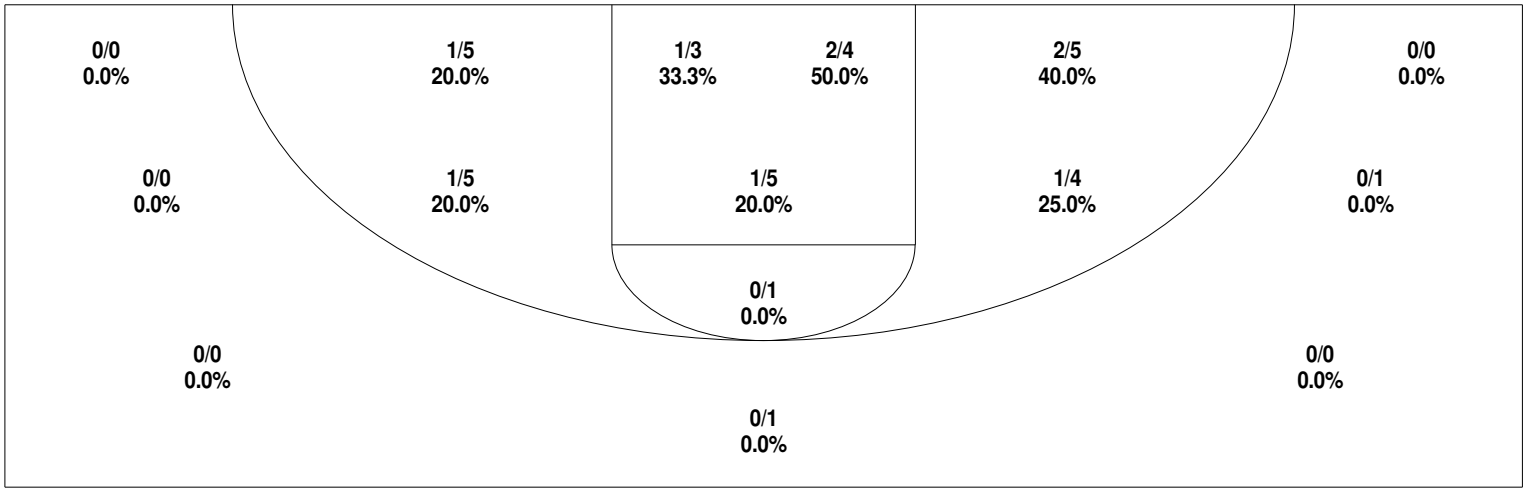
	G	FG	FGA	3Pt	3PA	FT	FTA	PTS	ORB	DRB	TR	PF	AST	TO	BS	ST	DA	P/S	MIN
Season	3	1	1	0	0	0	0	2	0	0	0	0	0	0	0	0	0	2.00	3:55
Per Game	3	0.33	0.33	0.00	0.00	0.00	0.00	0.67	0.00	0.00	0.00	0.00	0.00	0.00	0.00	0.00	0.00	2.00	
Per Minute	3	0.77	0.77	0	0	0	0	1.53	0	0	0	0	0	0	0	0	0		
Normalized	3	30.6	30.6	0	0	0	0	61.3	0	0	0	0	0	0	0	0	0		

Scoring Breakdown



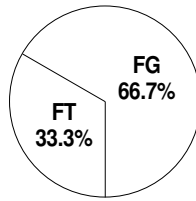
Scoring Range



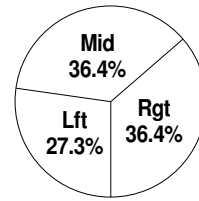


Shot Summary	M/A	%	PTS
3Pt FG	0/2	0.0%	0
2Pt FG	11/34	32.4%	22
Layups - L	1/1	100.0%	2
Layups - R	1/1	100.0%	2
Dunks	0/0	0.0%	0
Putbacks	0/0	0.0%	0
Overall Shooting	11/36	30.6%	22
Free Throws	11/12	91.7%	11
Total Points			33

Scoring Distribution

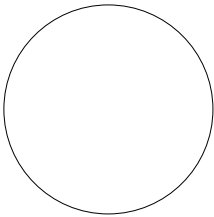


Scoring Locations

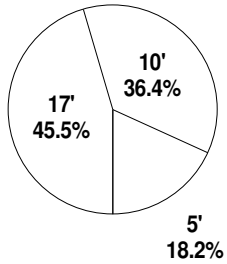


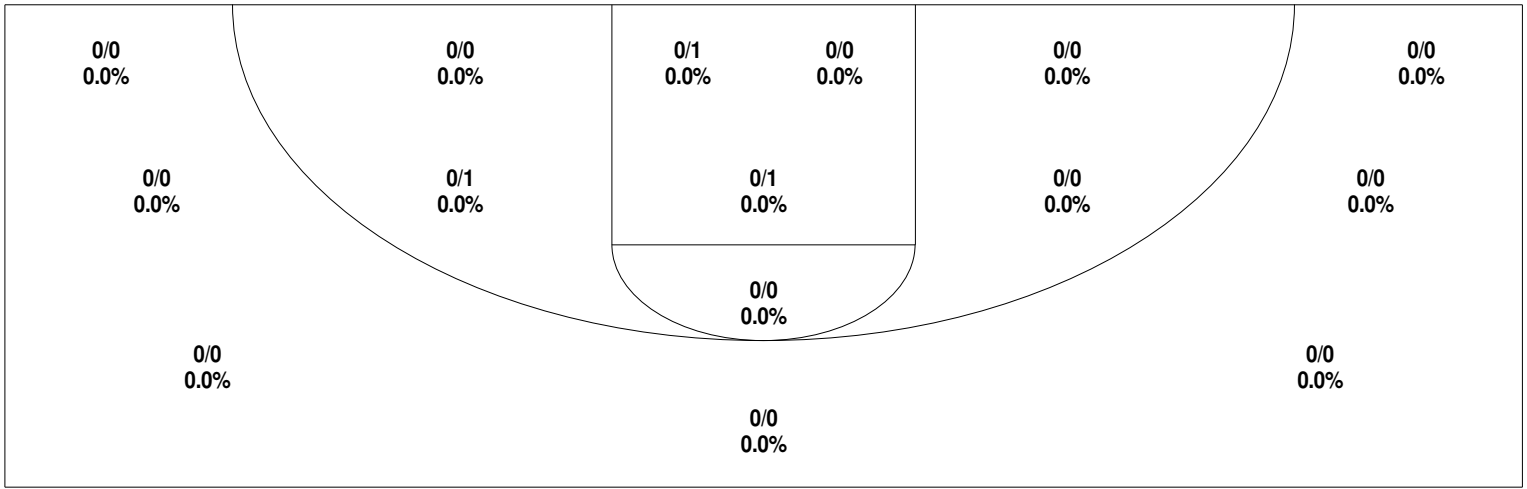
	G	FG	FGA	3Pt	3PA	FT	FTA	PTS	ORB	DRB	TR	PF	AST	TO	BS	ST	DA	P/S	MIN
Season	18	11	36	0	2	11	12	33	8	19	27	35	6	12	3	7	0	0.79	223
Per Game	18	0.61	1.89	0.00	0.11	0.61	0.67	1.83	0.44	1.06	1.50	1.94	0.33	0.67	0.17	0.39	0.00	0.79	
Per Minute	18	0.89	2.90	0	0.16	0.89	0.97	2.66	0.64	1.53	2.17	2.82	0.48	0.97	0.24	0.56	0		
Normalized	18	35.4	116	0	6.44	35.4	38.6	106	25.7	61.1	86.9	113	19.3	38.6	9.66	22.5	0		

Scoring Breakdown



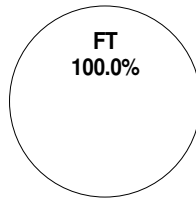
Scoring Range



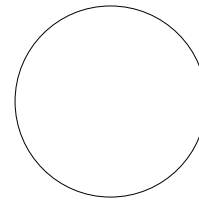


Shot Summary	M/A	%	PTS
3Pt FG	0/0	0.0%	0
2Pt FG	0/3	0.0%	0
Layups - L	0/0	0.0%	0
Layups - R	0/0	0.0%	0
Dunks	0/0	0.0%	0
Putbacks	0/0	0.0%	0
Overall Shooting	0/3	0.0%	0
Free Throws	1/2	50.0%	1
Total Points			1

Scoring Distribution

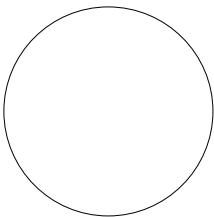


Scoring Locations

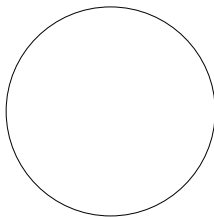


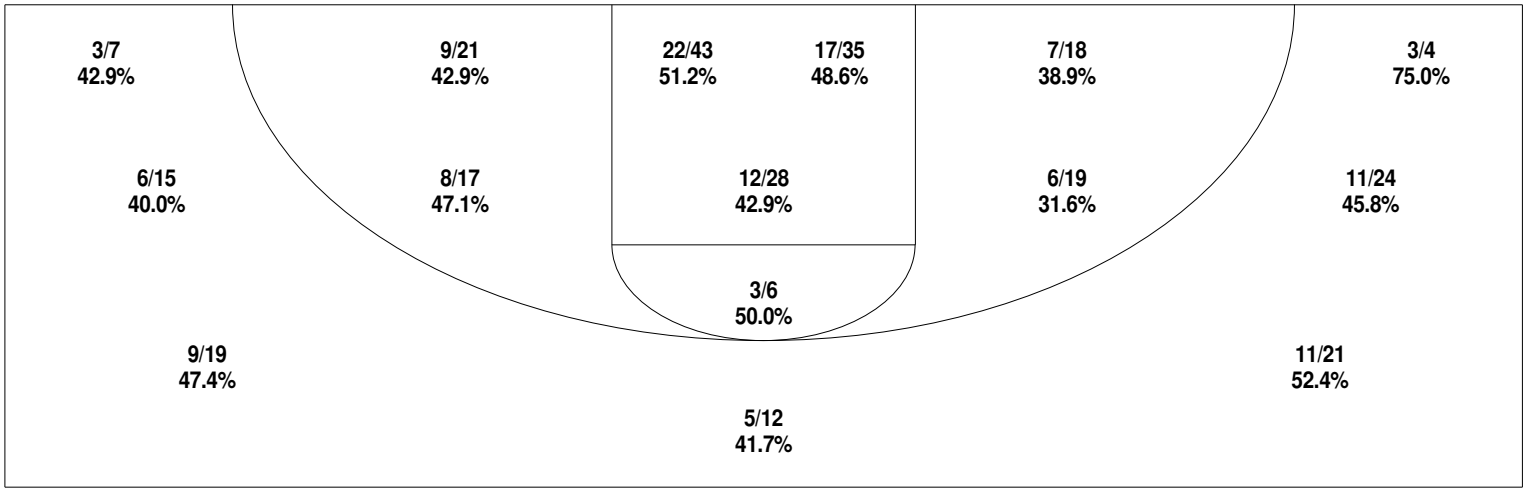
	G	FG	FGA	3Pt	3PA	FT	FTA	PTS	ORB	DRB	TR	PF	AST	TO	BS	ST	DA	P/S	MIN
Season	8	0	3	0	0	1	2	1	0	2	2	0	0	1	0	2	0	0.25	12:57
Per Game	8	0.00	0.38	0.00	0.00	0.13	0.25	0.13	0.00	0.25	0.25	0.00	0.00	0.13	0.00	0.25	0.00	0.25	
Per Minute	8	0	1.85	0	0	0.62	1.24	0.62	0	1.24	1.24	0	0	0.62	0	1.24	0		
Normalized	8	0	74.1	0	0	24.7	49.4	24.7	0	49.4	49.4	0	0	24.7	0	49.4	0		

Scoring Breakdown



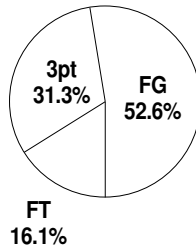
Scoring Range



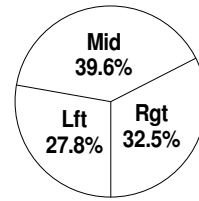


Shot Summary	M/A	%	PTS
3Pt FG	48/102	47.1%	144
2Pt FG	121/231	52.4%	242
Layups - L	12/14	85.7%	24
Layups - R	17/21	81.0%	34
Dunks	4/4	100.0%	8
Putbacks	4/5	80.0%	8
Overall Shooting	169/333	50.8%	386
Free Throws	74/87	85.1%	74
Total Points			460

Scoring Distribution

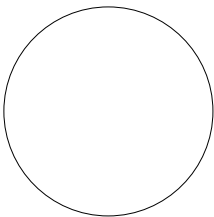


Scoring Locations

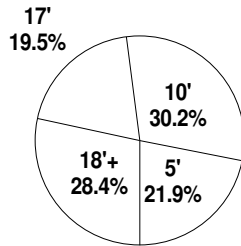


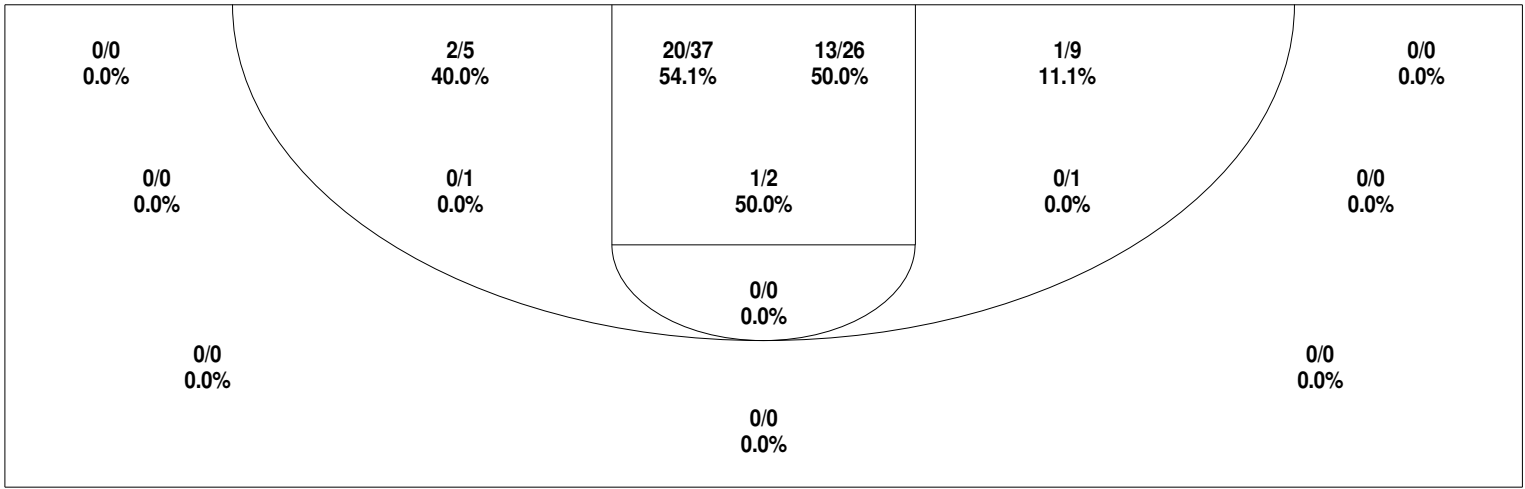
	G	FG	FGA	3Pt	3PA	FT	FTA	PTS	ORB	DRB	TR	PF	AST	TO	BS	ST	DA	P/S	MIN
Season	18	169	333	48	102	74	87	460	50	63	113	39	32	38	0	31	0	1.22	678
Per Game	18	6.72	12.8	2.67	5.67	4.11	4.83	25.6	2.78	3.50	6.28	2.17	1.78	2.11	0.00	1.72	0.00	1.22	
Per Minute	18	4.48	8.83	1.27	2.70	1.96	2.31	12.2	1.33	1.67	3.00	1.03	0.85	1.01	0	0.82	0		
Normalized	18	179	353	50.9	108	78.5	92.3	488	53.0	66.8	120	41.4	33.9	40.3	0	32.9	0		

Scoring Breakdown



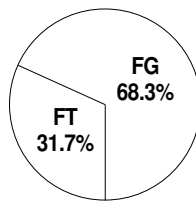
Scoring Range



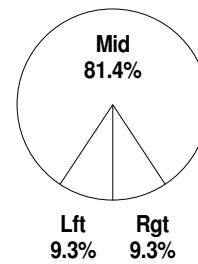


Shot Summary	M/A	%	PTS
3Pt FG	0/0	0.0%	0
2Pt FG	43/90	47.8%	86
Layups - L	2/3	66.7%	4
Layups - R	3/4	75.0%	6
Dunks	0/0	0.0%	0
Putbacks	1/2	50.0%	2
Overall Shooting	43/90	47.8%	86
Free Throws	40/57	70.2%	40
Total Points			126

Scoring Distribution

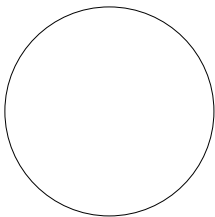


Scoring Locations

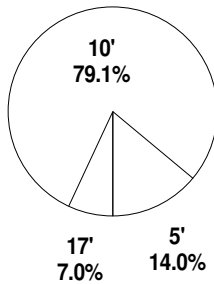


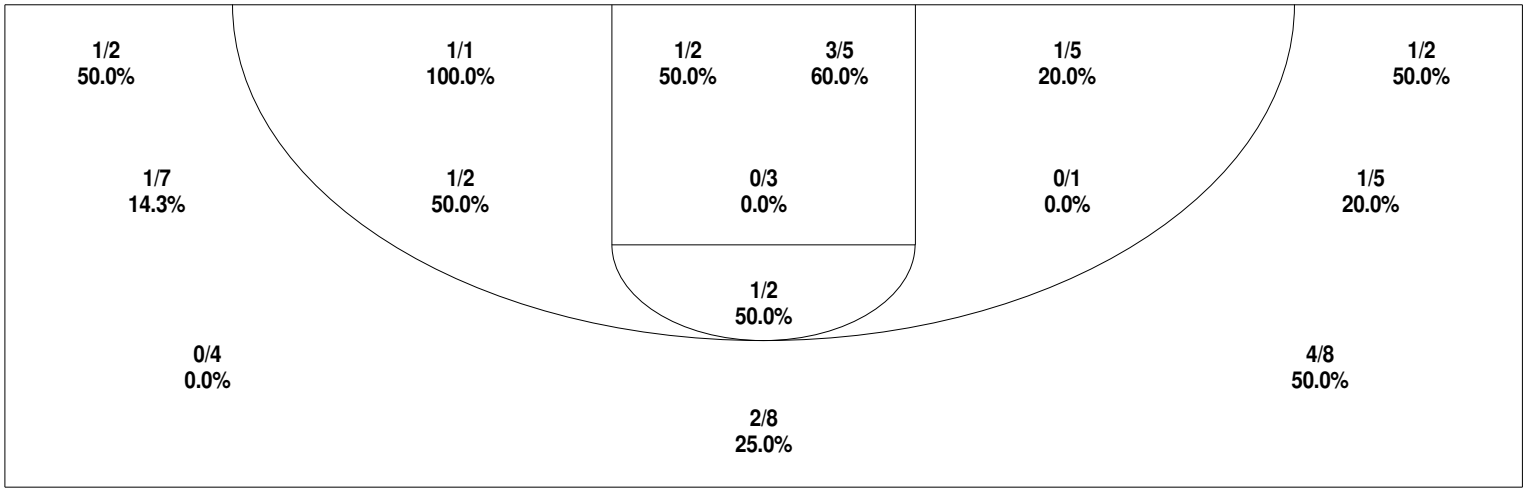
	G	FG	FGA	3Pt	3PA	FT	FTA	PTS	ORB	DRB	TR	PF	AST	TO	BS	ST	DA	P/S	MIN
Season	18	43	90	0	0	40	57	126	32	54	86	43	11	17	0	6	0	1.07	364
Per Game	18	2.39	5.00	0.00	0.00	2.22	3.17	7.00	1.78	3.00	4.78	2.39	0.61	0.94	0.00	0.33	0.00	1.07	
Per Minute	18	2.12	4.44	0	0	1.97	2.81	6.22	1.58	2.66	4.24	2.12	0.54	0.84	0	0.30	0		
Normalized	18	84.8	178	0	0	78.9	112	249	63.1	107	170	84.8	21.7	33.5	0	11.8	0		

Scoring Breakdown



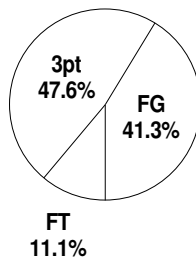
Scoring Range



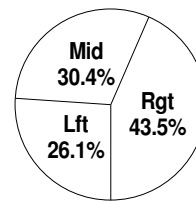


Shot Summary	M/A	%	PTS
3Pt FG	10/36	27.8%	30
2Pt FG	13/27	48.1%	26
Layups - L	2/2	100.0%	4
Layups - R	3/4	75.0%	6
Dunks	0/0	0.0%	0
Putbacks	0/0	0.0%	0
Overall Shooting	23/63	36.5%	56
Free Throws	7/12	58.3%	7
Total Points			63

Scoring Distribution

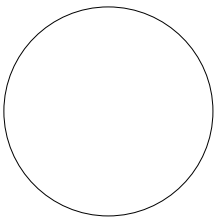


Scoring Locations



	G	FG	FGA	3Pt	3PA	FT	FTA	PTS	ORB	DRB	TR	PF	AST	TO	BS	ST	DA	P/S	MIN
Season	13	23	63	10	36	7	12	63	4	7	11	15	4	12	0	5	0	0.91	135
Per Game	13	1.00	2.08	0.77	2.77	0.54	0.92	4.85	0.31	0.54	0.85	1.15	0.31	0.92	0.00	0.38	0.00	0.91	
Per Minute	13	2.20	6.03	0.96	3.45	0.67	1.15	6.03	0.38	0.67	1.05	1.44	0.38	1.15	0	0.48	0		
Normalized	13	88.1	241	38.3	138	26.8	46.0	241	15.3	26.8	42.1	57.5	15.3	46.0	0	19.2	0		

Scoring Breakdown



Scoring Range

